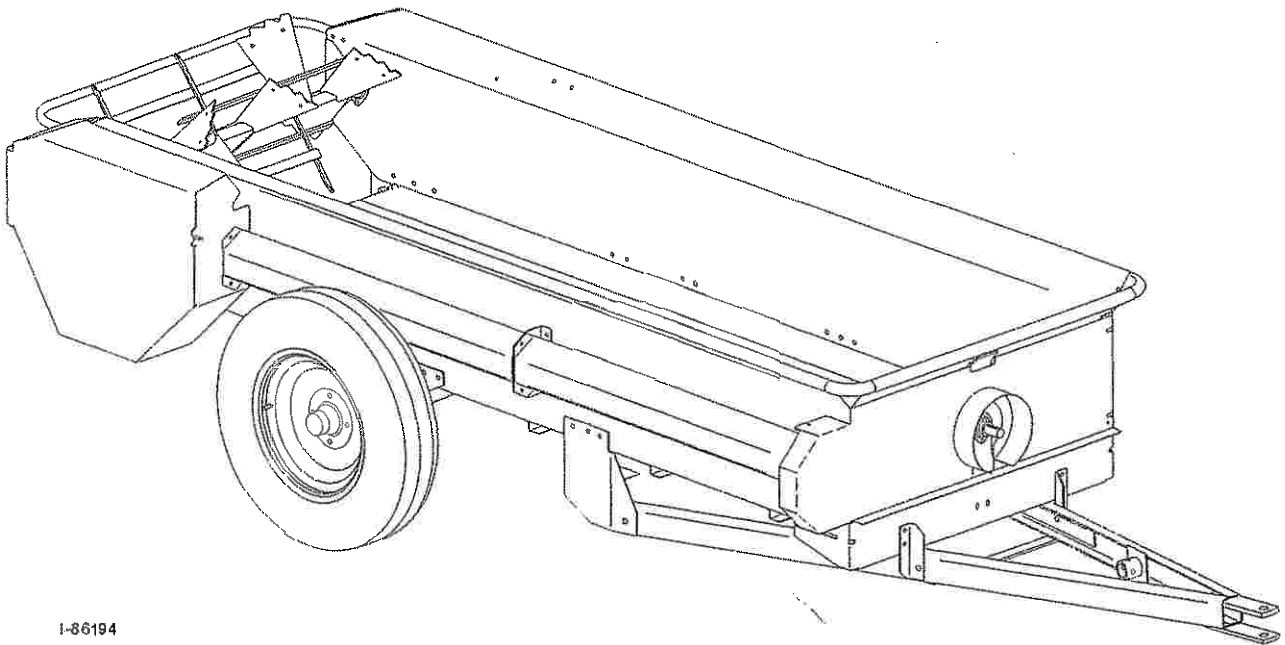




OPERATOR'S MANUAL

**MILLCREEK MODELS:
6700P and 8700P PTO SPREADERS**



1-86194

PUBLICATION DATE: 3/24/04, Rev. 2

MILLCREEK PART # 43823

Millcreek Manufacturing Company
525 Reservoir Road
Honey Brook, PA 19344
Phone: 1-800-311-1323
www.millcreekspreaders.com



WARNING: DO NOT assemble, operate, or maintain this equipment without first reading and understanding the information provided in this manual and the ADMA Safety Manual for Agricultural Implement Drivelines. Failure to follow all safety precautions as stated in these manuals may result in serious personal injury or death.

WARRANTY INFORMATION

Millcreek Manufacturing Company (hereinafter called the Company) warrants to the original Purchaser, the Equipment, manufactured by the Company, to be free from defects in material and workmanship under normal use and service. The Company obligation under this Warranty shall be limited to replacement or repair of any parts thereof, free of charge, to the original Purchaser provided, however, that the part(s) to be replaced or repaired, shall, within one year after delivery to the original Purchaser, be demonstrated to be defective; which determination shall be made by the Company. The said components or parts must be returned through the Selling Dealer or Distributor directly to the Company with all transportation charges prepaid. Notice of defect shall be furnished in writing to the Seller and to the agent through whom the machinery was purchased, disclosing in full all known defects and failure in operation and use. Reasonable time shall be given to the Seller to remedy any such defects and failures.

This Warranty does not cover, under any circumstances, any parts, components, or materials which, in the opinion of the Seller and the Company, have been subjected to neglect, misuse, alteration, accident, or repaired with parts other than those manufactured by and obtained from Millcreek Manufacturing Company.

This Warranty does not cover components which are already covered by a separate warranty provided by the supplier of said parts or components.

This Warranty is made in lieu of all other warranties, expressed or implied, including any warranty of merchantability and fitness for use and purpose and of all other obligations or liabilities on the Company part and any implied warranty. The Company neither assumes nor authorizes any other person to assume for it, any other liability in connection with the sale of this equipment. This Warranty shall not apply to this equipment or to any part thereof which has been subjected to accident, negligence, alteration, abuse, or misuse.

The Company makes no warranty whatsoever in respect to accessories or parts not supplied by the Company. The term "original Purchaser," as used in this Warranty, shall be deemed to mean that person for whom the equipment is originally supplied. This Warranty shall apply only within the boundaries of the continental United States.

Under this Warranty, the Company cannot guarantee that conditions existing beyond its control will not affect the Company's ability to obtain materials or manufacture necessary replacement parts.

The Company reserves the right to make design changes, or changes in specifications at any time, without any contingent obligation on the part of the Company to purchasers of machines and parts previously sold.

The Company warrants the construction of the equipment sold herein and will replace at the Company's expense for a period of one year from the date hereof, any parts which prove defective as determined under the terms of this Limited Warranty. High density, polyethylene floors are warranted for 20 years from cracking, rotting, splitting, or peeling. Ten (10) year, pro-rated warranty on sides (i.e. Rhino® lining).

TRADEMARKS

The Millcreek logo is a trademark of the Millcreek Manufacturing Company. All other brand or product names mentioned are the registered trademarks or trademarks of their respective owners.

COPYRIGHT

Copyright© 2004 Millcreek Manufacturing Company. All rights reserved. No part of this publication may be reproduced, or distributed without the prior written permission of Millcreek Manufacturing Company, 34 Zimmerman Road, Leola, PA 17540. Subject to change without notice.



TABLE OF CONTENTS

SECTION 1: INTRODUCTION.....	1-1
Guide to this Manual	1-1
For Your Safety... ..	1-1
Safety Labels	1-2
Inspection and Warranty Registration	1-5
SECTION 2: ATTACHING THE SPREADER TO THE TRACTOR	2-1
Connecting the Spreader to the Tractor	2-1
Attaching the Spreader PTO to the Tractor PTO	2-2
SECTION 3: OPERATION	3-1
Understanding Spreader Operation	3-1
The Spreader Operating Components	3-1
Guidelines for Loading the Spreader	3-1
Operating the Spreader	3-1
SECTION 4: MAINTENANCE & ADJUSTMENT	4-1
Guidelines for Regular Maintenance	4-1
Procedures for Spreader Adjustment	4-3
AdjustingtheHoldingPawl	4-3
AdjustingtheDrive Chains	4-4
APPENDIX A: PARTS REFERENCE	A-1
General Spreader Specifications	A-1
Ordering Information	A-2
Hitch Assembly	A-2
WheelandHubAssembly	A-4
RearDriveAssembly	A-6
FrontDriveAssembly	A-8
ApronChainandSprocketAssembly	A-10
Safety Shields and Guards	A-12
PTO Shaft Assembly	A-14
APPENDIX B: SPREADER OPTIONS PARTS REFERENCE	B-1
EndgateAssembly	B-2
SafetyChainAssembly	B-3

SECTION 1: INTRODUCTION

Guide to this Manual

This manual contains all the information necessary to safely operate and maintain the Millcreek 6700P or 8700P PTO Spreader. Consult the Table of Contents for a detailed list of topics covered. You'll find this manual's step-by-step procedures easy to follow and understand. Should questions arise, please contact your Millcreek dealer before starting any of the procedures in this manual.

NOTE: Procedures provided in this manual apply to *both* spreader models (Model 6700P and Model 8700P) unless specifically noted otherwise.

Regarding the information presented in this manual:

- All safety, operating, and servicing information reflects current production models at the time of publication of this manual.
- References made to left, right, front, and rear are those directions viewed when facing the unit from the rear.

Please read all sections in the manual carefully—including the important safety information found in this section—before beginning any assembly/operation procedures; doing so allows you to use your Millcreek Spreader safely with optimal performance.

For Your Safety...

For your safety, Millcreek documentation contains the following types of safety statements (listed here in order of increasing intensity):

- **NOTE:** A clarification of previous information or additional pertinent information.
- **ATTENTION:** A safety statement indicating that potential equipment damage may occur if instructions are not followed.



CAUTION: A safety statement that reminds of safety practices or directs attention to unsafe practices which could result in personal injury if proper precautions are not taken.



WARNING: A *strong* safety statement indicating that a hazard exists which can result in injury or death if proper precautions are not taken.



DANGER! *The utmost levels of safety must be observed; an extreme hazard exists which would result in high probability of death or irreparable serious personal injury if proper precautions are not taken.*

The best operator is a careful operator. By using common sense, observing general safety rules, and adhering to the precautions specific to the spreader, you, the operator, can promote safe equipment operation.

For Your Safety.. (continued)

In addition to observing the specific precautions listed throughout the manual, the following general precautions apply and *must be heeded* for proper, safe operation.



WARNING: Keep hands and feet from under the spreader at all times. Ensure that you are safely distanced from any other persons before operating the spreader.



WARNING: DO NOT attempt to operate the spreader in areas with steep inclines, ditches, large rocks, stumps, or holes which may endanger the operator by upsetting the tractor or cause damage to the spreader.



WARNING: To prevent serious personal injury and to promote safe spreader operation, keep all shields in place during operation. Ensure that all mounting hardware is properly tightened.



WARNING: Never clean, adjust, or repair the spreader while the tractor is running.



WARNING: Never get off the tractor while it is in motion, while the spreader is in operation, and/or while the PTO is engaged.



WARNING: Never wear loose clothing when operating the spreader as it may become caught in the moving parts of the machine.



WARNING: Never allow children or anyone else to ride on the spreader.

ATTENTION: For proper and safe operation of the spreader, periodically inspect all parts for excessive wear. Replace worn components with factory-authorized parts.

ATTENTION: To prevent the hitch from coming disconnected during operation, use the proper size hitch pin with a safety cotter at all times.

ATTENTION: Be sure to use a safety chain when traveling with the spreader on a public roadway.

Safety Labels

Following are the locations and descriptions of all labels on the spreader (labels are identical for both Models 6700P and 8700P); refer to Figure 1A. Please note that some labels denote model number, model description, etc, while others contain important safety messages.

Each **Safety Label** contains an important safety message starting with a keyword as discussed earlier in this section (e.g. ATTENTION, CAUTION, WARNING, DANGER). For your safety and the safe operation of your equipment, review all labels and heed all safety messages as printed on the labels.

Be sure to keep the safety labels clean and readable. If the labels ever become damaged or illegible, contact your Millcreek dealer for replacements.

Safety Labels (continued)

Spreader Safety Labels

<u>Label Part#</u>	<u>Description</u>
42792	DANGER-NO riders
42710	WARNING- Flying Debris
42756	WARNING- Entanglement, Do NOT operation without shields
42772	WARNING- Spreader combination safety label-moving parts, read manual
42783	ATTENTION -Do NOT exceed specified speed
42778	MillcreekLogo Label
42779/42780	Spreader Serial Number Label
42786/42787	Spreader Model Number Label

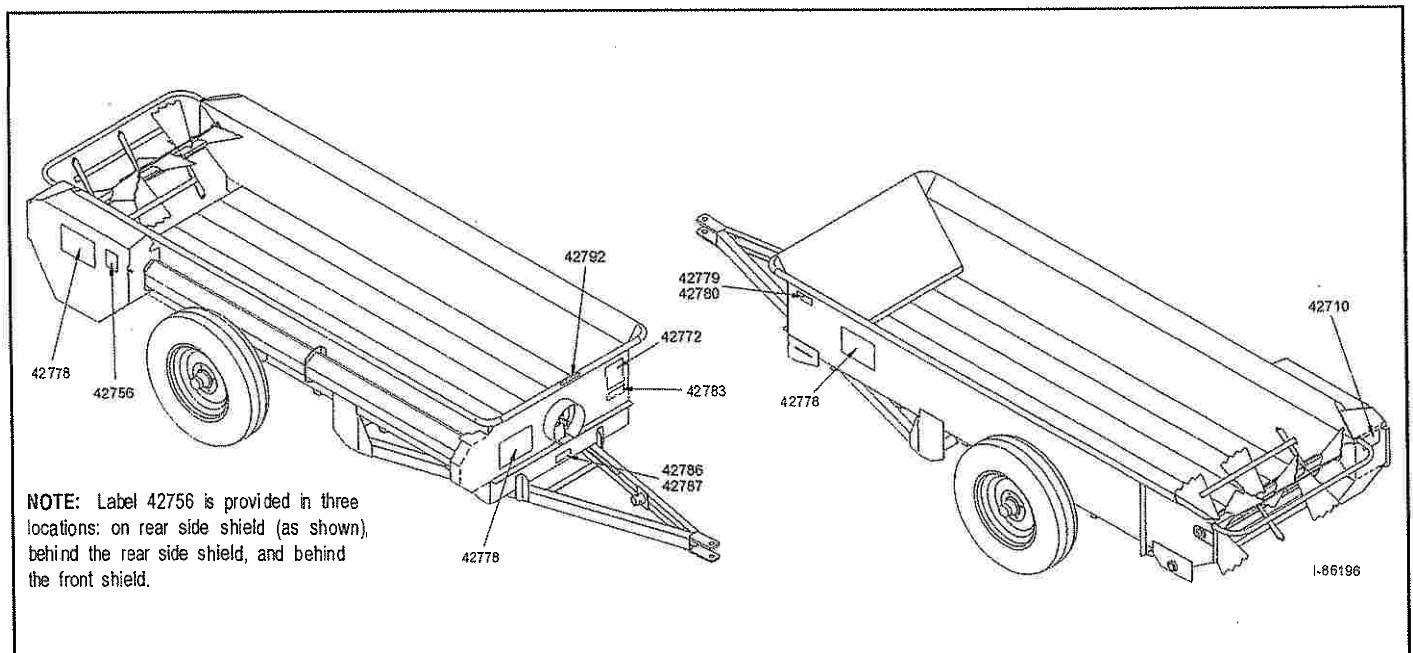


Figure 1A-Spreader Safety Label Locations

For your safety, be sure to locate all safety labels and review their content before proceeding with operating the spreader!

Safety Labels (continued)

! DANGER NO RIDERS

42792

! WARNING

Entanglement Hazards



Moving parts can crush or cut.

STAY CLEAR of machine while engine is running and/or machine is operating. Keep hands, feet, clothing, and hair away from operating parts.



Never adjust, lubricate, or clean machine while engine is running and/or machine is operating.

Never operate machine without safety shields in place.

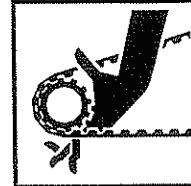


Read and understand operator's manual and safety labels before operating or servicing the machine.

Failure to follow these warnings may result in serious injury or death.

42772

! WARNING



Entanglement Hazard.

DO NOT OPERATE without safety shield in place. Moving parts can crush and cut.

42756

! WARNING

Entanglement / Flying Debris Hazards.



DO NOT STAND in back of machine while engine is running and/or machine is operating. Rotating beaters and/or flying debris can cause serious personal injury or death.



Approach the rear of the machine **ONLY** when all power sources are shut OFF and all moving parts have stopped.

42710

ATTENTION

DO NOT exceed 6 mph when spreading.
DO NOT exceed 15 mph when transporting a full load.
When traveling on public roadways, use a safety chain and adhere to all applicable motor vehicle codes.

42783

Inspection and Warranty Registration

Most spreader models are shipped from your Millcreek Dealer completely assembled and ready for operation. Inspect your new spreader thoroughly upon receipt to ensure that it has been shipped to you in a satisfactory manner. Immediately notify the freight company and your Millcreek dealer in case of shipping damage, shortage(s), and/or errors.

NOTE: If the spreader has not been pre-assembled, please refer to the *Supplemental Assembly Instructions*. Please contact your local Millcreek Dealer for assistance as needed. If you ordered an **optional endgate** with your spreader, you may also have to assemble this component on your spreader; refer to Appendix B at the back of this manual for the corresponding parts drawing.

Following inspection of your new spreader, locate the Millcreek Warranty Card in the literature packet shipped with your spreader. For proper warranty registration, Millcreek requires that you fill out the warranty registration card and return it *within 30 days* to:

MILLCREEK WARRANTY REGISTRATION
Millcreek Manufacturing Company
34 Zimmerman Road
Leola, PA 17540

For your safety, be sure to locate all safety decals and review their content before proceeding with operating the spreader.

SECTION 2: ATTACHING THE SPREADER TO THE TRACTOR

Connecting the Spreader to the Tractor

The spreader hitch is designed to work with a standardized tractor hitch. To connect the spreader hitch to the tractor hitch, refer to Figure 2A and adhere to the following guidelines:

- Adjust the drawbar so that it is 13 to 20 inches above the ground as shown in Figure 2A.
- Extend or shorten the tractor hitch to obtain the horizontal distance from the end of the tractor power take-off (PTO) shaft to the center of the hitch pin hole (as shown in Figure 2A).
- Adjust the height of the spreader hitch with the jack so the tractor drawbar matches the height of the spreader hitch.
- Back the tractor into the hitch until the holes line up.
- Fasten the spreader hitch to the drawbar with a hitch pin that fits securely (i.e. so that it will not come out during spreader operation) and lock in place with the clip as shown.
- Remove the weight from the jack by lowering the spreader hitch on the drawbar.
- Swing the jack to its horizontal position and lock it in position to provide maximum ground clearance.



WARNING: Damage to the spreader or other vehicle, as well as injury to the operator, may occur if a properly-sized hitch pin is not installed as recommended. Note that the installation of the safety clip, as noted in Figure 2A, is also required for safe spreader operation.

ATTENTION: An improperly located hitch point may cause damage to the universal joints of the PTO. The recommended length of the PTO shaft should range from 36 to 51 inches center to center of the "U" joints.

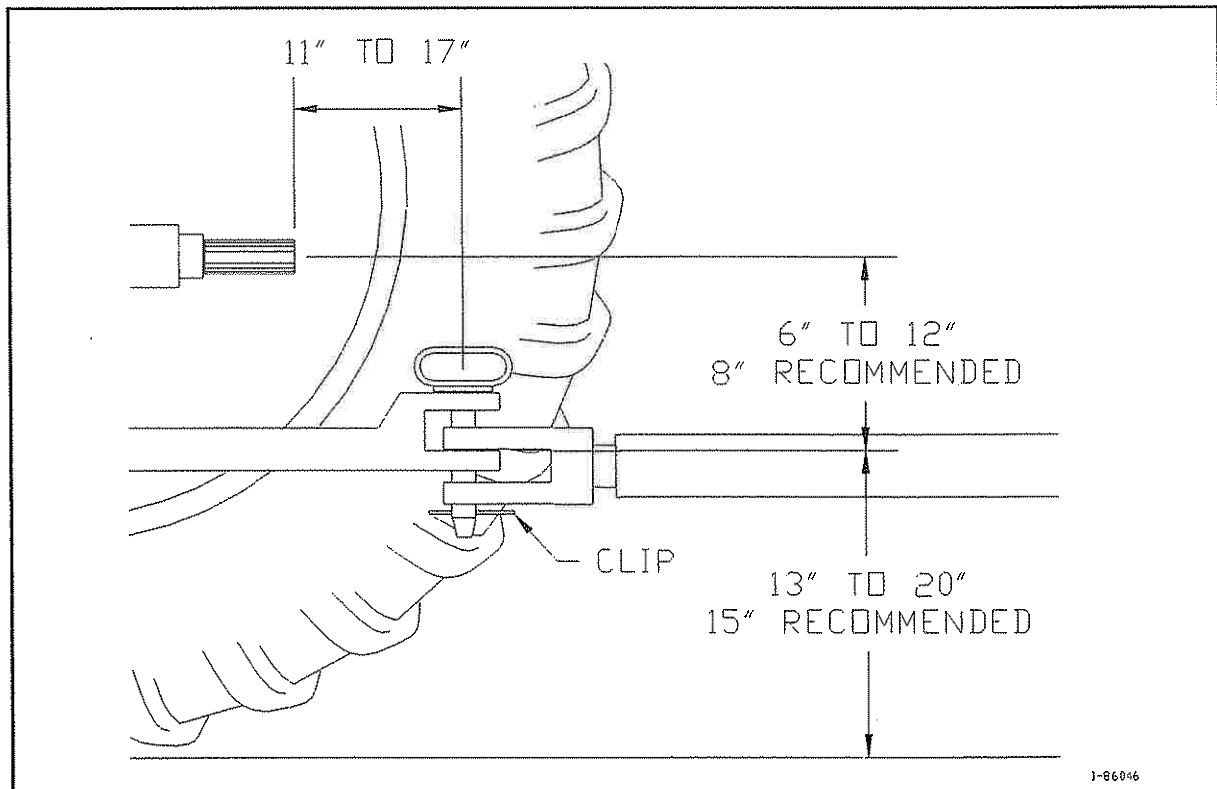


Figure 2A - Specifications for Connecting the Spreader/Tractor Hitch

Attaching the Spreader PTO to the Tractor PTO

1. Align the PTO splines on the spreader with the PTO splines on the tractor.
2. Pull back the slide collar on the PTO yoke, and slide the spreader PTO assembly onto the tractor PTO shaft. *Be sure the slide collar snaps forward to indicate that the spreader PTO assembly is properly secured to the tractor PTO shaft.*
3. Fasten the PTO safety chain to the hitch cross member to prevent rotation of the safety shield during operation.



WARNING: *Failure to secure the PTO safety chain will allow the safety shield to rotate.* Operating the spreader without the safety shield in proper position may result in serious personal injury or death.

SECTION 3: OPERATION

Understanding Spreader Operation

Proper and safe operation of the Millcreek 6700P/8700P Spreader requires: (1) being familiar with the spreader's operating components and (2) heeding all safety precautions as stated in this manual.

The Spreader Operating Components

By definition, the left and right sides of the spreader are determined while sitting on the tractor seat. PTO model spreaders are powered through the tractor drive train. The PTO powers the apron chain and the beater. For further information on engaging the PTO drive line, please refer to the following section, *Operating the Spreader*.

Guidelines for Loading the Spreader for Operation

- Millcreek recommends that you *load the spreader from the front toward the back* to facilitate easier unloading.
- **ATTENTION:** NEVER store manure in the spreader between unloading times during critical cold weather months. When a frozen load could result in severe equipment damage (i.e. torn floor apron chain).
- DO NOT store wet manure in the spreader (or keep the spreader outdoors with manure in it)—doing so will accelerate rusting of the steel.

Operating the Spreader

WARNING! Before proceeding with operation of the spreader, review all safety statements as provided in Section 1 of this manual.



WARNING: To prevent serious personal injury, ensure that ALL safety shields are in place on the spreader before starting operation. NEVER operate the spreader without ALL safety shields in place.

1. If you have a spreader with the endgate option, lift the end gate.
2. With the tractor at idle, simply activate the switch to engage the PTO.
NOTE: For older tractor models, you may need to decompress the clutch and activate the tractor PTO lever. Release the clutch slowly so the PTO shaft will start the spreader apron chain and beaters.
3. For best results, run the tractor throttle at the 540rpm PTO shaft speed and regulate the ground speed to no more than 6 mph.
4. When the spreader box is empty, stop the PTO by disengaging the lever/switch on the tractor. Lower the endgate (if applicable).
5. Refer to Section 4 in this manual for maintenance to be performed following operation of the spreader.

IMPORTANT! Be aware that it may be necessary to re-tighten bolts after a few hours of initial operation – watch and listen for any loose components. Be sure to check the wheel bolts for proper torque (75-80 ft. lbs.)

SECTION 4: MAINTENANCE & ADJUSTMENT

Guidelines for Regular Maintenance



WARNING: All shields must be replaced after maintenance or adjustment procedures are performed. Failure to do so could result in serious personal injury or death.

Performing regular maintenance on your Millcreek Spreader will help ensure optimal performance. Please follow these guidelines for maintaining your spreader:

- Clean the spreader once a week and before storing the unit for an extended period of time.
ATTENTION: NEVER store manure in the spreader between unloading times during critical cold weather months when a frozen load could result in severe equipment damage (i.e. torn floor apron chain). Storing wet manure in the spreader (or keeping the spreader outdoors with manure in it) will accelerate rusting of the steel.
- Check the spreader each time it is used for loose, bent, broken or missing parts.
ATTENTION: During operation, listen for abnormal sounds which might indicate loose parts or other equipment damage. Correct any parts problems immediately; expanded parts views of all spreader assemblies are provided in the Appendixes at the back of this manual.
ATTENTION: For safe and proper operation of the spreader, adhere to the following specifications for tightening the hitch hardware; failure to tighten all hitch hardware securely may result in equipment damage.

<u>Hardware</u>	<u>Torque Specification</u>
1/2"	60 ft. lbs.
3/8"	25 ft. lbs.
5/16"	15 ft. lbs.

- Check and grease the lube fitting at the PTO (at the front of the spreader) once a year. Remove the telescoping shaft, clean, and add a light coating of grease.
- Check that implement tires have adequate air pressure (30 psi). Wheel bolts should be torqued to 75 to 80 ft. lbs.
- Inspect the safety chain regularly to check the condition of the links and locking/hooking mechanisms; replace the chain as soon as weakness/breakage is noted.
- Periodically check the belt tension. Refer to the **Front Drive Assembly Parts Detail** in Appendix A at the back of this manual to locate the belt tension components. The belt and tensioning spring are located under the front belt shield. As needed, re-tension the belt by tightening the eye bolt until the spring stretches to five (5) inches.
- Apply chain lube once a month to the drive chains (shown in Figure 4B); use vegetable oil or a common spray lube for chains.

Guidelines for Regular Maintenance (continued)

- Periodically check the floor apron chain for proper tension/tightness (refer to Figure 4A).

Procedure for checking/adjusting the floor apron chain:

- Check the distance between the apron chain and the bottom of the side sheet at the apron's lowest point (just behind the wheels). If the distance is more than six (6) inches, the chain must be tightened.

NOTE: The recommended floor apron chain tension is achieved when the apron's lowest point is 4 to 4-1/2 inches below the frame (behind the tire).

- Use a 9/16" wrench to loosen the two side nuts on each side of the spreader box as shown in Figure 4A. Then, turn the *front* nut clockwise with a 9/16" wrench until proper tension is achieved. Repeat for the other side. *Make sure that the chains on each side of the apron are equally taut.*
- When the apron chain adjustment is accomplished, re-tighten the side nuts.

- Apply chain lube once a month to the floor apron chain; use vegetable oil or a common spray lube for chains.

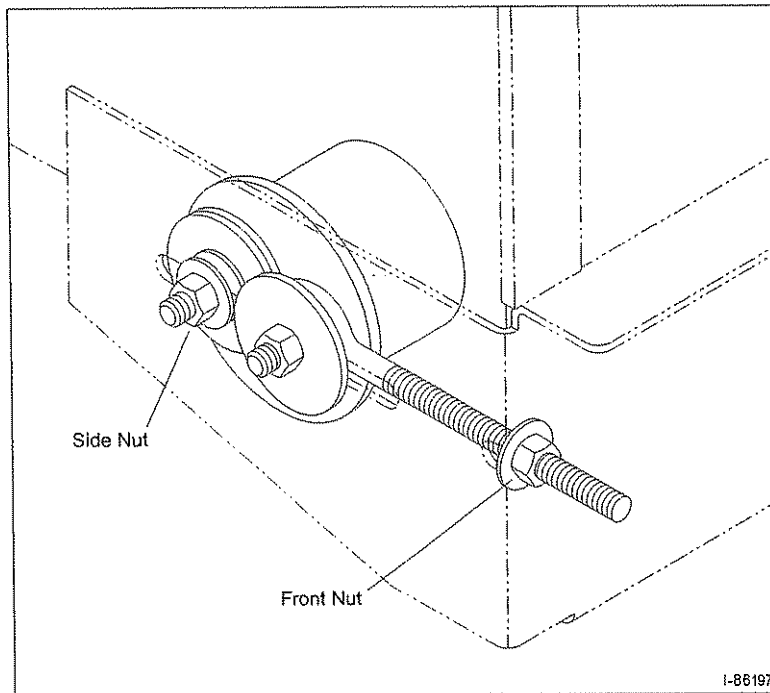


Figure 4A-Adjusting the Floor Apron Chain for Proper Tension

Procedures for Spreader Adjustment

Problems with spreader operation may indicate that certain adjustments are required to restore proper functioning. The following procedures address common problems which may be encountered in spreader operation.

Adjusting the Holding Pawl

If the apron chain is not advancing properly, the holding pawl may need to be re-adjusted to restore proper apron chain speed and functioning.

To Reset the Holding Pawl (refer to Figure 4B):

- (a) Rotate the crankarm sprocket until the short link is in the horizontal rearward position.
- (b) Loosen thenut thatsecures the holding pawl.
- (c) Adjust the holding pawl to obtain a 1/8" gap between the end of the pawl and bottom of the notch as shown in Figure 4B. Tighten the nut to secure the holding pawl.

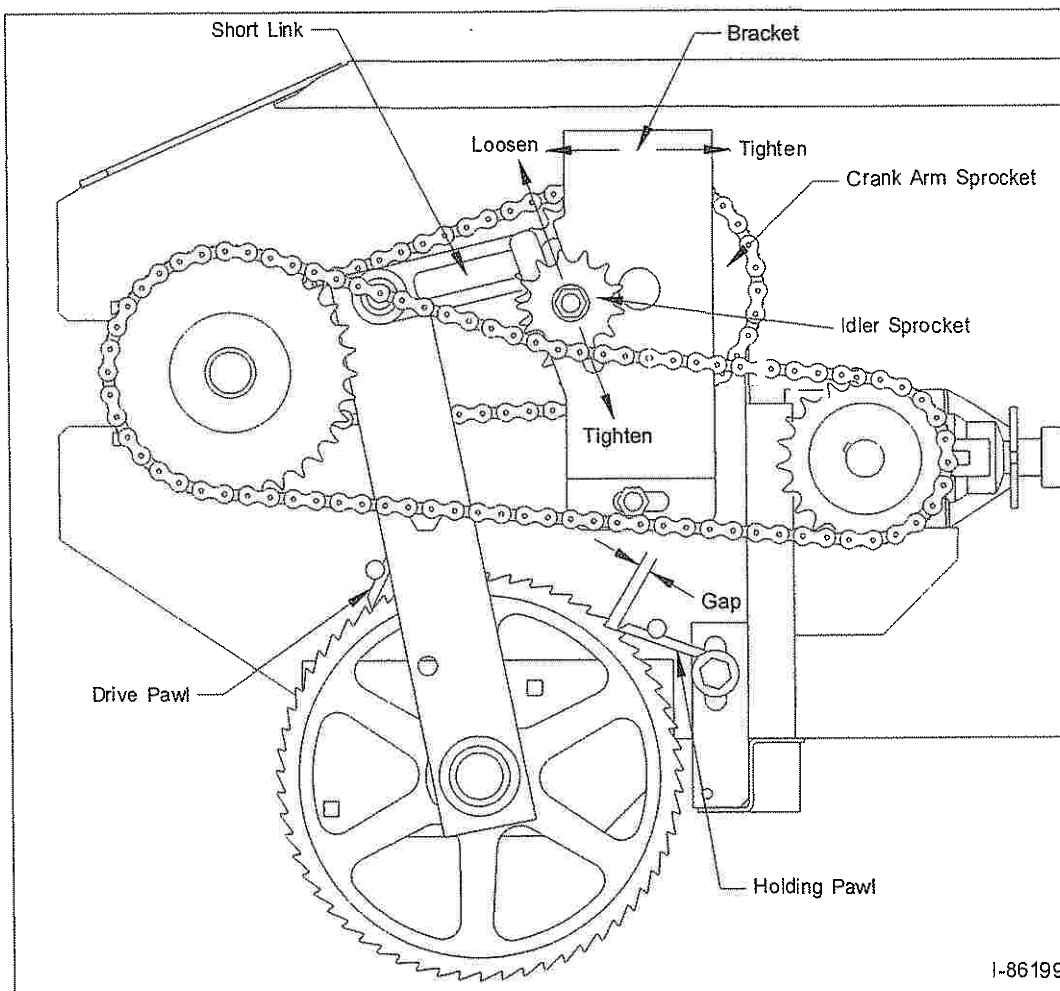


Figure 4B-Adjusting the Holding Pawl and Drive Chains

Procedures for Spreader Adjustment (continued)

Adjusting the Drive Chains

NOTE: The drive chains are factory-set for the proper operating tension and should not require adjustment. The following instructions are provided for reference only, in rare cases where re-adjustment or replacement may become necessary.

Refer to **Figure 4B** on the previous page for an illustration of the drive chains and related components. The chains should be snug, but not too tight. If the chains are too tight, they may cause excessive wear on the bushings in the crank arm sprocket (resulting in premature failure). If the chains are too loose, they can slip and jump sprocket teeth when the spreader is operating with a full load.

- **Check the drive chains in two positions:**
 - (a) **Gearbox to Beater Chain:** check the bottom span.
 - (b) **Ratchet Drive Chain:** check top or bottom span.

NOTE: When pushing on the middle of the span with one finger (about 20 lbs. pressure), the chain should deflect about 3/8 to 1/2 inch. A straight-edge ruler may be helpful in verifying the proper setting.
- **Adjust the drive chains** according to Figure 4B and the following guidelines:
 - (a) **Gearbox to Beater Chain:** adjust the **idler sprocket** as indicated.
 - (b) **Ratchet Drive Chain:** adjust the **bracket position** by loosening the two (2) 1/2" bracket bolts and sliding the bracket forward or backward as shown.

APPENDIX A: PARTS REFERENCE

The following information is provided for your reference in understanding how the spreader is assembled and how spare parts can be identified and ordered properly.

General Spreader Specifications

	Model 6700P	Model 8700P
Capacity, <i>struck</i>	30 cubic ft.	39 cubic ft.
Capacity, <i>heaped</i>	56 cubic ft.	72 cubic ft.
Body Length	89.5inches	114 inches
Body Width	37inches	37inches
Body Height	17.5inches	17.5inches
Overall Length	11ft., 6 inches	13 ft., 6 inches
Overall Width	61 inches	61 inches
Overall Height	33 inches	33inches
Loading Height	33 inches	33inches
Construction	All steel, polyfloor	All steel, poly floor
Apron Chain	#62 steel detachable <i>Optional T-Rod 11/32</i>	#62 steel detachable <i>Optional T-Rod 11/32</i>
Tires (30 psi)	R15 (good used tires)	R15 (good used tires)
Beater Bearings	Sealed ball bearings	Sealed ball bearings
Beater Drive	Gearbox	Gearbox
Apron Drive	Ratchet	Ratchet
Body Finish	Powder coating	Powder coating
Weight (with tires)	660 lbs.	740lbs.
Tractor Weight and HP required	1200 lbs. and 18 HP & greater	1400 lbs. and 22 HP & greater

Ordering Information

When ordering replacement parts, please provide the following information to your local Millcreek dealer:

- Model and Serial Number of the unit (located on the front right corner of the spreader)
- Part Number and Description as it appears on the following drawings/parts lists

Hitch Assembly

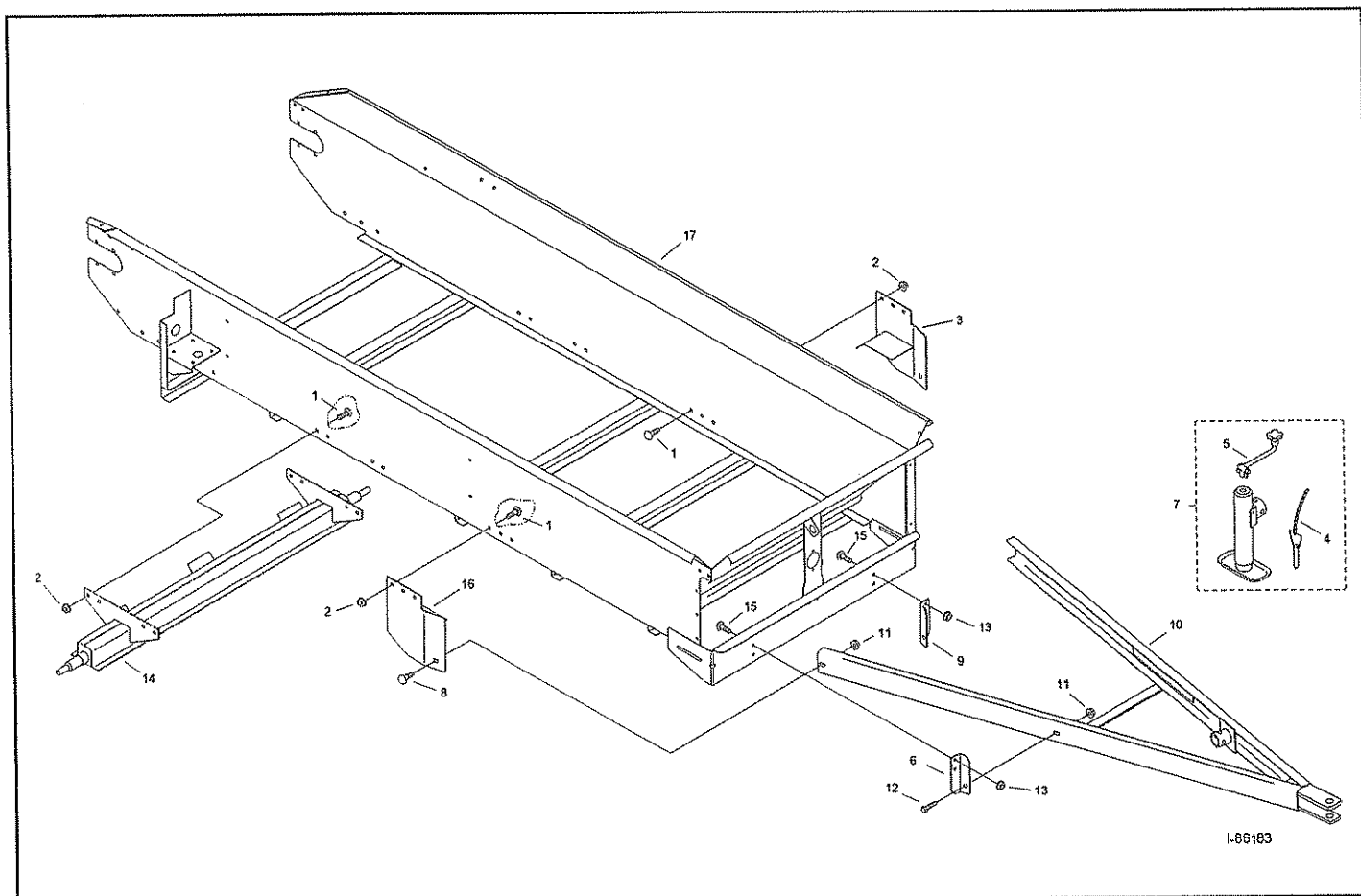


Figure A1 - Hitch Assembly Parts Detail

Hitch Assembly (continued)

<u>Item#</u>	<u>MC Part#</u>	<u>Qty.</u>	<u>Component Description</u>
1	34191	14	3/8 x 3/4 Carriage Bolt
2	34009	14	3/8 Flange Nut
3	261204	1	Left Hitch Bracket
4	215323	1	Jack Pin & Chain
5	215331	1	Jack Crank
6	261203	1	Right Front Hitch Bracket
7	215320	1	Complete Jack (includes items 25 & 26)
8	34112	2	1/2 x 1 Carriage Bolt
9	261202	1	Left Front Hitch Bracket
10	261199	1	Hitch
11	34384	4	1/2 Flange Nut
12	34085	2	1/2 x 1 Flange Bolt
13	34099	4	5/16 Flange Nut
14	261209	1	Axle
15	34274	4	5/16 x 3/4 Carriage Bolt
16	261207	1	Right Hitch Bracket
17	261384	1	Box6700PTO
	261187	1	Box8700 PTO

Wheel and Hub Assembly

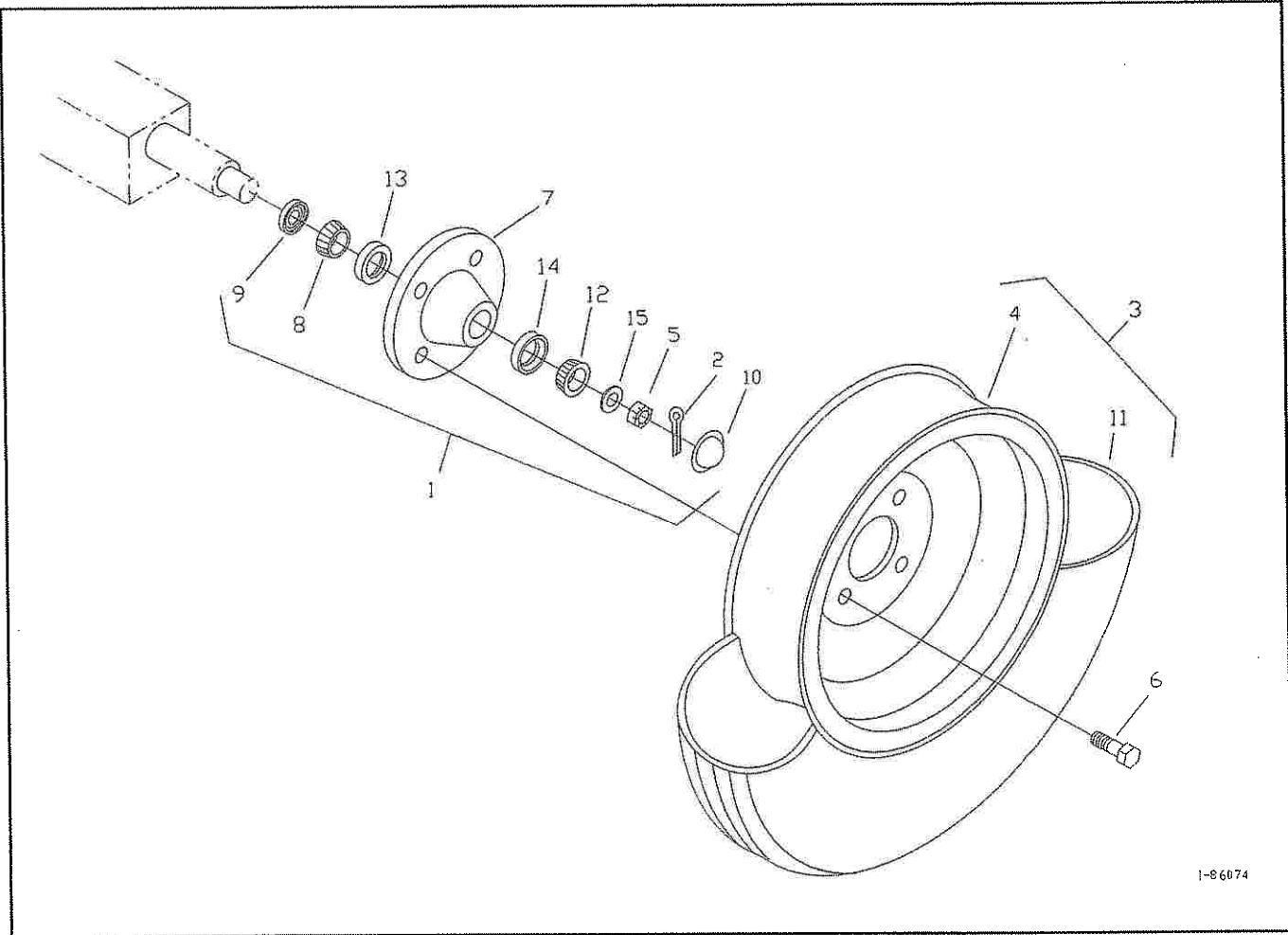


Figure A2 - Wheel and Hub Assembly Parts Detail

Wheel and Hub Assembly (continued)

<u>Item#</u>	<u>MC Part#</u>	<u>Qty.</u>	<u>Component Description</u>
1	215109	2	Complete Hub
2	34209	2	Cotter Pin
3	215124	2	Wheel and Used Tire (includes items 4, 11)
	215131	2	Model 6700 PTO Wheel and New Tire (includes items 4, 11)
	215132	2	Model 8700 PTO Wheel and New Tire (includes items 4, 11)
4	215106	2	Wheel
5	215205	2	Spindle Nut
6	215222	8	Wheel Lug
7	215204	2	Hub (includes items 13, 14)
8	215203	2	Inner Bearing Cone
9	215202	2	Hub Seal
10	215215	2	Dust Cap
11	215122	2	New Model 6700 Tire
	215125	2	New Model 8700 Tire
	215209	2	Used Tire
12	215229	2	Outer Bearing Cone
13	215277	2	Inner Bearing Cup
14	215278	2	Outer Bearing Cup
15	34201	2	3/4" SAE Washer

Rear Drive Assembly

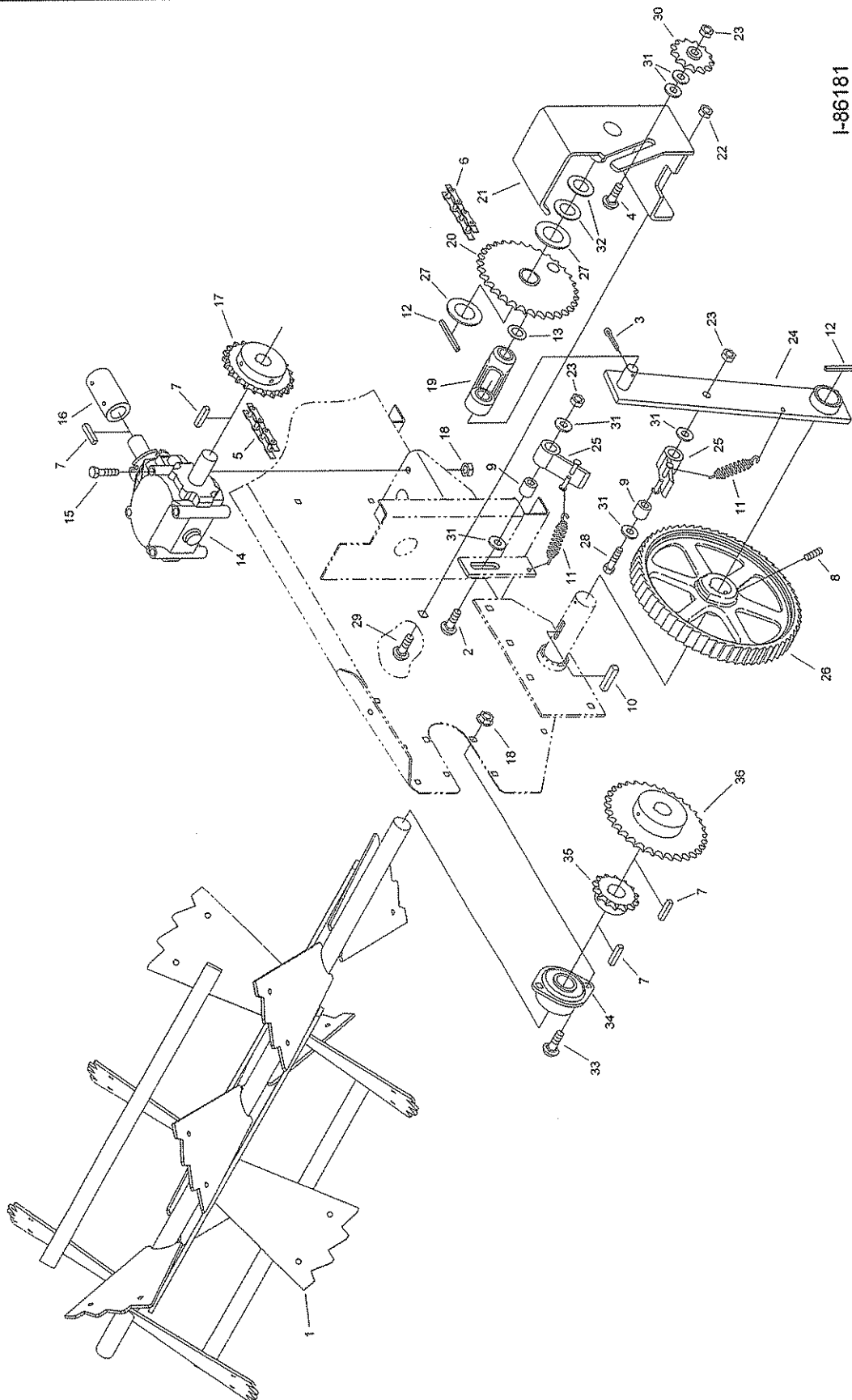


Figure A3 - Rear Drive Assembly Parts Detail

Rear Drive Assembly (continued)

<u>Item #</u>	<u>MC Part #</u>	<u>Qty.</u>	<u>Component Description</u>
1	261509	1	Beater
2	34266	1	1/2 x 2-1/2 Carriage Bolt
3	34209	1	Cotter Pin
4	34240	1	1/2 x 2 Carriage Bolt
5	210412	1	Chain #50 RC x 83 Links (includes connector link 210284)
6	210372	1	Chain #50 RC x 58 Links (includes connector link 210284)
7	210130	4	Key 1/4 x 1
8	34383	1	3/8 x 3/4 Set Screw
9	210375	2	Pawl Bushing
10	220176	1	Key 5/16 x 1-1/2
11	220104	2	Pawl Spring
12	220181	2	3/16 x 2-3/4 Roll Pin
13	34201	1	3/4 SAE Washer
14	210174	1	Gearbox
15	34241	4	3/8 x 4-1/2 Bolt
16	220161	1	1" Shaft Coupler (includes 2 set screws 34325)
17	210389	1	22 Tooth Sprocket (includes set screw 34325)
18	34009	8	3/8 Flange Nut
19	261229	1	Pitman Link (includes 2 bushings 210403)
20	261230	1	Crank Sprocket (includes bushing 210100)
21	261367	1	Crank Sprocket Bracket
22	34384	2	1/2 Flange Nut
23	34211	3	1/2 Nylon Lock Nut
24	261227	1	Crank Arm (includes bushing 210364)
25	261288	2	Pawl
26	210368	1	Ratchet Wheel
27	210378	2	1-1/2 Washer
28	34230	1	1/2 x 3 Bolt
29	34112	2	1/2 x 1 Carriage Bolt
30	210205	1	13 Tooth Sprocket
31	34227	6	1/2 SAE Washer
32	260281	2	1-1/8 Washer
33	34191	4	3/8 x 3/4 Carriage Bolt
34	261407	2	1-1/8" 2-Flange Bearing
35	210428	1	14 Tooth Sprocket (includes 2 set screws 34325)
36	210429	1	33 Tooth Sprocket (includes 2 set screws 34325)

Front Drive Assembly

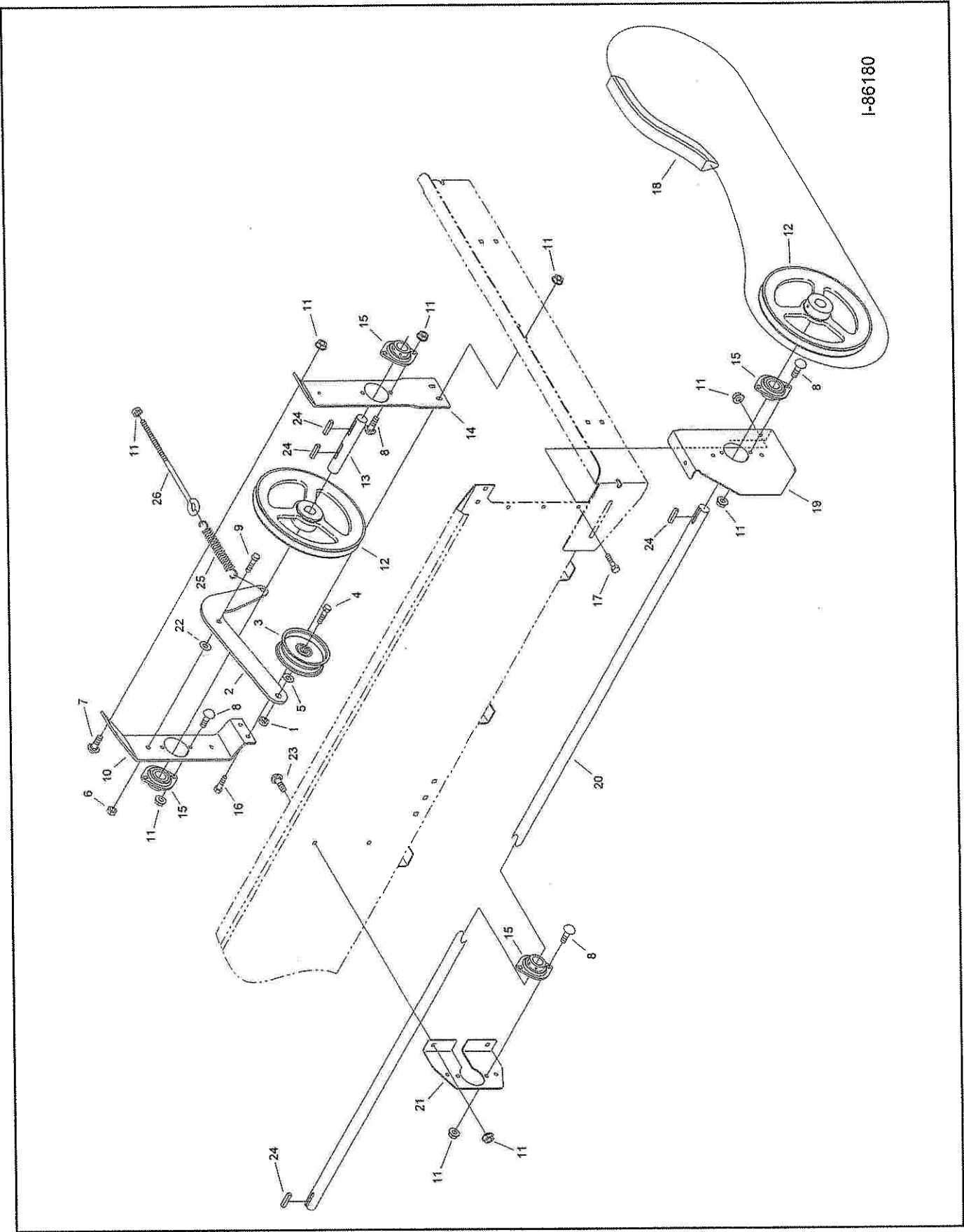


Figure A4-Front Drive Assembly Parts Detail

Front Drive Assembly (continued)

<u>Item #</u>	<u>MC Part #</u>	<u>Qty.</u>	<u>Component Description</u>
1	34384	1	1/2 Flange Nut
2	261274	1	Belt Idler Arm
3	210200	1	Belt Tensioner
4	34271	1	1/2 x 2-1/2 Bolt
5	34227	5	1/2Washer
6	34095	1	3/8 Stover Nut
7	34275	2	5/16 x 1 Carriage Bolt
8	34274	8	5/16 x 3/4 Carriage Bolt
9	34199	1	3/8 x 1 Bolt
10	261223	1	Rear PTO Shaft Bracket
11	34099	18	5/16 Flange Nut
12	210202	2	Belt Sheave (includes set screw 34325)
13	261289	1	PTO Stub Shaft
14	261222	1	Front PTO Shaft Bracket
15	210144	4	1"2-Flange Bearing
16	34336	2	5/16 x 1 Flange Bolt
17	34136	3	5/16 x 1/2 Flange Bolt
18	210369	1	Belt
19	261224	1	Front Drive Shaft Bracket
20	261234	1	Side Drive Shaft (8700)
	261387	1	Side Drive Shaft(6700)
21	261244	1	Rear Drive Shaft Bracket
22	34018	1	3/8Washer
23	34337	2	5/16 x 1/2 Carriage Bolt
24	210131	4	1/4 x 1-1/4 Key
25	220138	1	Spring
26	220173	1	Eyebolt

Apron Chain and Sprocket Assembly

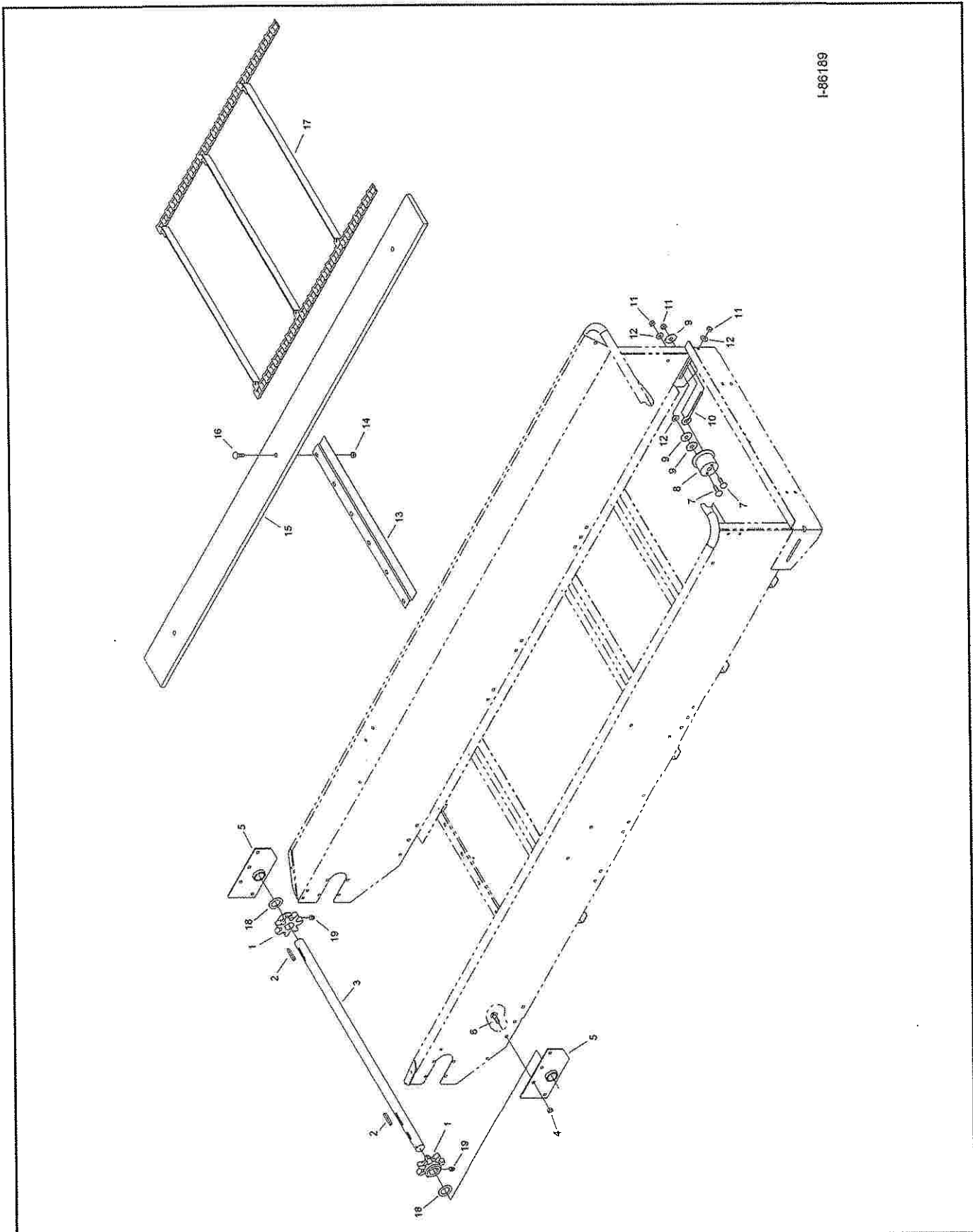


Figure A5 - Apron Chain and Sprocket Assembly Parts Detail

Apron Chain and Sprocket Assembly (continued)

<u>Item#</u>	<u>MC Part #</u>	<u>Qty.**</u>	<u>Component Description</u>
1	210381	2	Apron Sprocket
2	220178	2	5/16 x 2-1/4 Key
3	261219	1	Apron Shaft
4	34009	6	3/8 Flange Nut
5	261213	2	Apron Shaft Bracket (includes bushing 210364)
6	34191	6	3/8 x 3/4 Carriage Bolt
7	34247	4	3/8 x 3-1/4 Carriage Bolt
8	220167	2	Plastic Idler
9	34373	6	3/8 Large Washer
10	220172	2	Eyebolt
11	34220	6	3/8 Nylon Stop Nut
12	34018	6	3/8 Washer
13	260482	1/2	Poly Board Bracket
14	34099	12/18	5/16 Flange Nut
15	261480	6	Poly Board (6700)
	261482	6	Poly Board (8700)
16	34320	12/18	5/16 x 1-1/4 Carriage Bolt
17	261478	1	Complete Apron (6700)
	261479	1	Complete Apron (8700)
	261373	11/14	Apron Slat
	210282	166/220	Standard Link
	210257	11/14	Left Connector Link
	210255	11/14	Right Connector Link
	220109	22/28	1/4 x 5/8 Rivet
18	210378	2	1-1/2 Thrust Washer
19	34312	2	3/8 x 3/8 Set Screw

****NOTE:** If two quantities are listed (e.g. 4/6), the first quantity applies for Model 6700P, and the second applies for Model 8700P.

Safety Shields & Guards

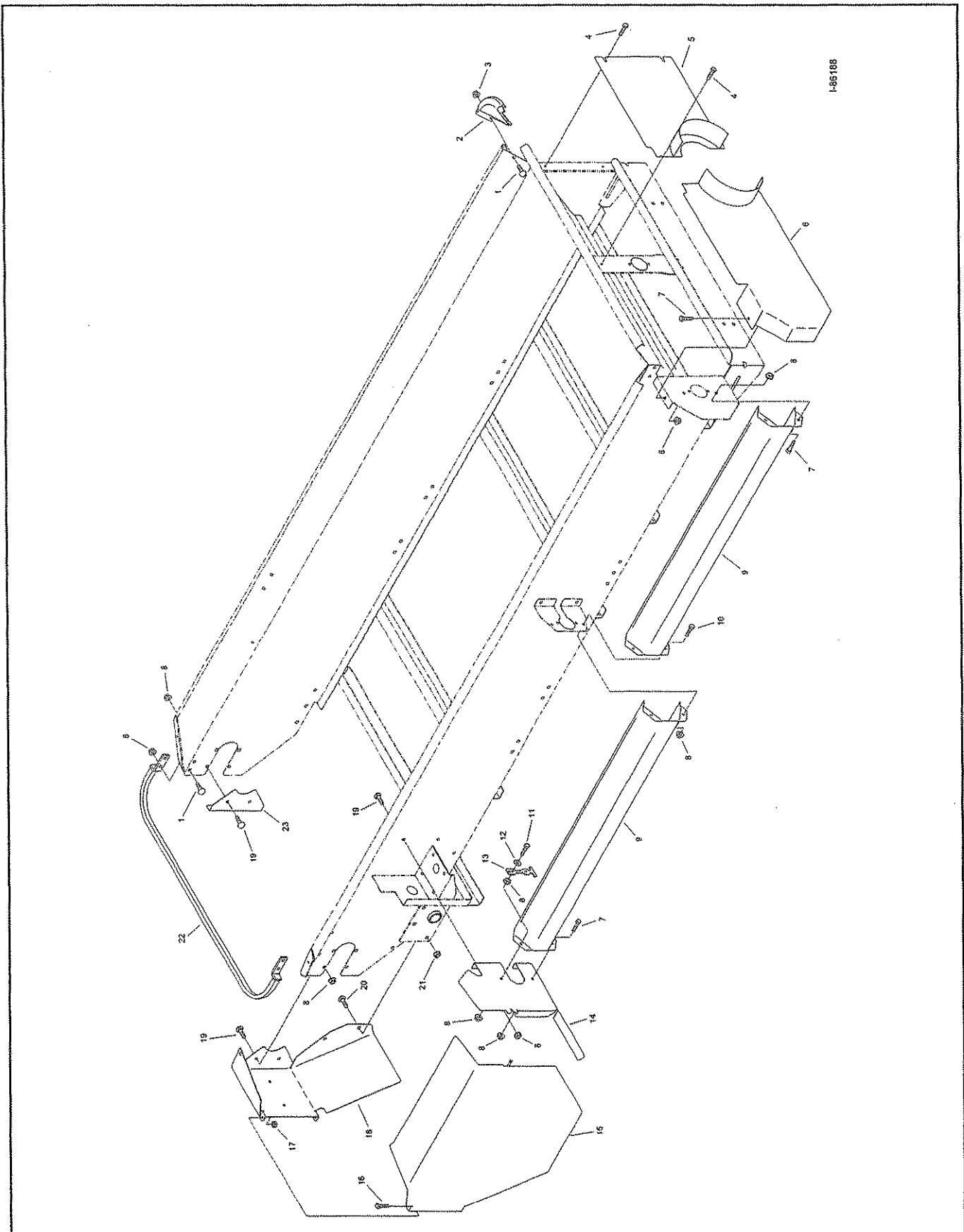


Figure A6-Safety Shields and Guards Parts Detail

Safety Shields (continued)

<u>Item #</u>	<u>MC Part #</u>	<u>Qty.</u>	<u>Component Description</u>
1	34274	8	5/16 x 3/4 Carriage Bolt
2	215314	2	Cast Corner
3	34367	4	5/16 Large Flange Nut
4	34118	3	5/16 x 3/4 Self Tapping Bolt
5	261351	1	Front Left Shield
6	261352	1	Front Right Shield
7	34136	5	5/16 x 1/2 Bolt
8	34099	21	5/16 Flange Nut
9	261388	1	Side Shield (6700)
	261236	2	Side Shield (8700)
10	34328	2	5/16 x 3/4 Flange Bolt
11	34222	1	5/16 x 1-1/4 Bolt
12	34057	1	5/16 Washer
13	220113	1	Rubber Latch
14	261293	1	Gearbox Shield
15	261378	1	Rear Shield Door
16	34200	2	5/16 x 3/4 Bolt
17	34072	2	5/16 Stover Nut
18	261291	1	Back Shield
19	34337	8	5/16 x 1/2 Carriage Bolt
20	34191	1	3/8 x 3/4 Carriage Bolt
21	34009	1	3/8 Flange Nut
22	261238	1	Beater Guard Bar
23	261290	1	Left Rear Guard

PTO Shaft Assembly

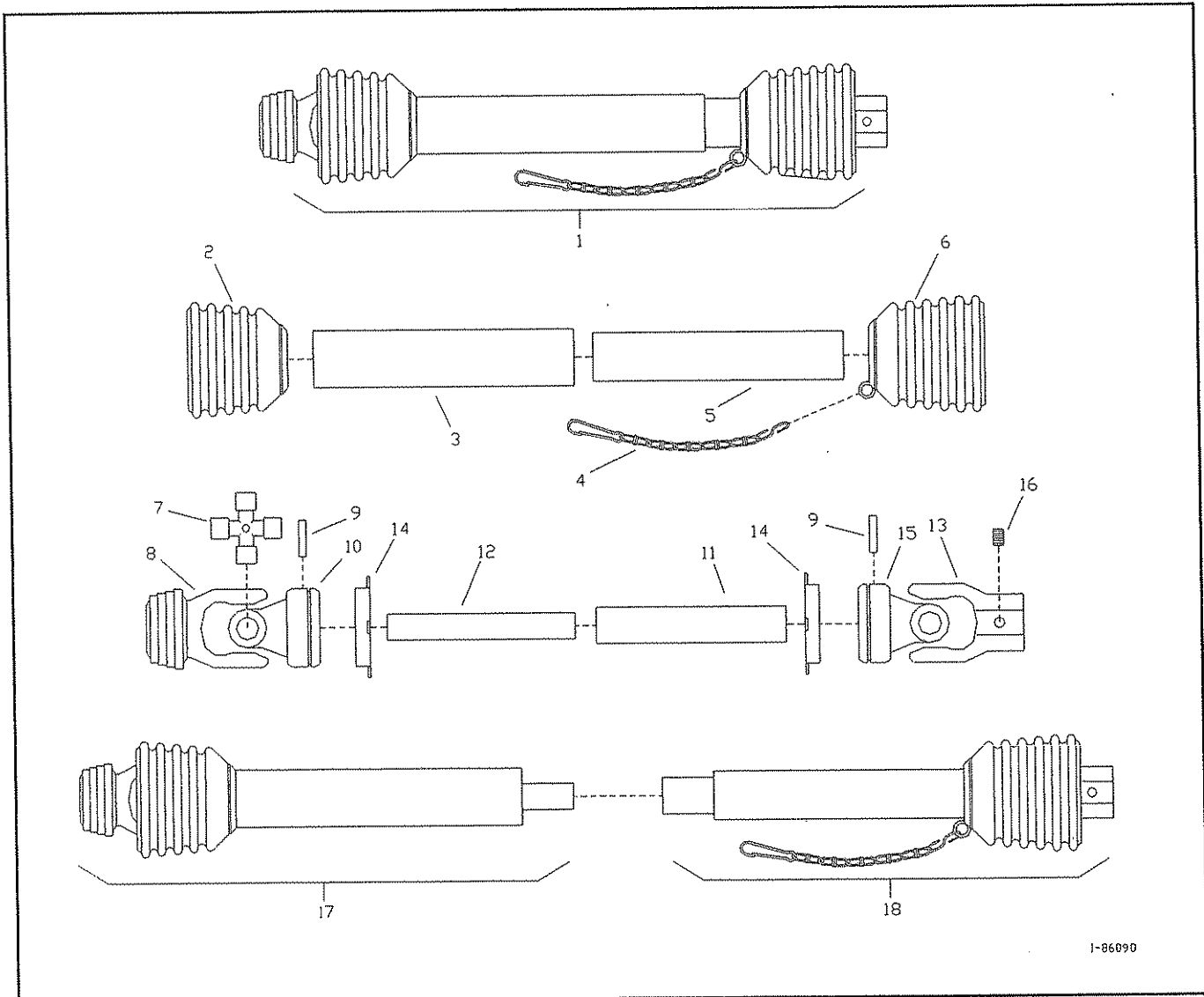


Figure A7-PTO Shaft Assembly Parts Detail

PTO Shaft Assembly (continued)

<u>Item #</u>	<u>MC Part #</u>	<u>Qty.</u>	<u>Component Description</u>
1	210164	1	Complete PTO Shaft
2	210285	1	5 Rib Shield Cone
3	210286	1	Outer Shield Tube
4	210291	1	Safety Chain
5	210290	1	Inner Shield Tube
6	210335	1	6 Rib Shield Cone
7	210292	2	Cross and Bearings
8	210293	1	Snap Yoke
9	210298	2	8 x 50mm Roll Pin
10	210325	1	Inboard Yoke
11	210295	1	Outer Profile
12	210296	1	Inner Profile
13	210297	1	Keyed Yoke
14	210310	2	Bearing Ring
15	210294	1	Inboard Yoke
16	34312	2	3/8 x 3/8 Set Screw
17	210311	1	Front Half PTO Shaft
18	210312	1	Rear Half PTO Shaft

APPENDIX B: SPREADER OPTIONS PARTS REFERENCE

The following options are available for Model 6700P and 8700P PTO Spreaders. Please refer to the appropriate parts/assembly drawings provided in this Appendix. Some options come pre-assembled on the spreader from the factory; others may require assembly/installation. Please contact Millcreek for additional instructions as needed if the appropriate instructions have not been included with your shipment.

Model 6700P/8700P Spreader Options

- End Gate
- Safety Chain

Endgate Assembly

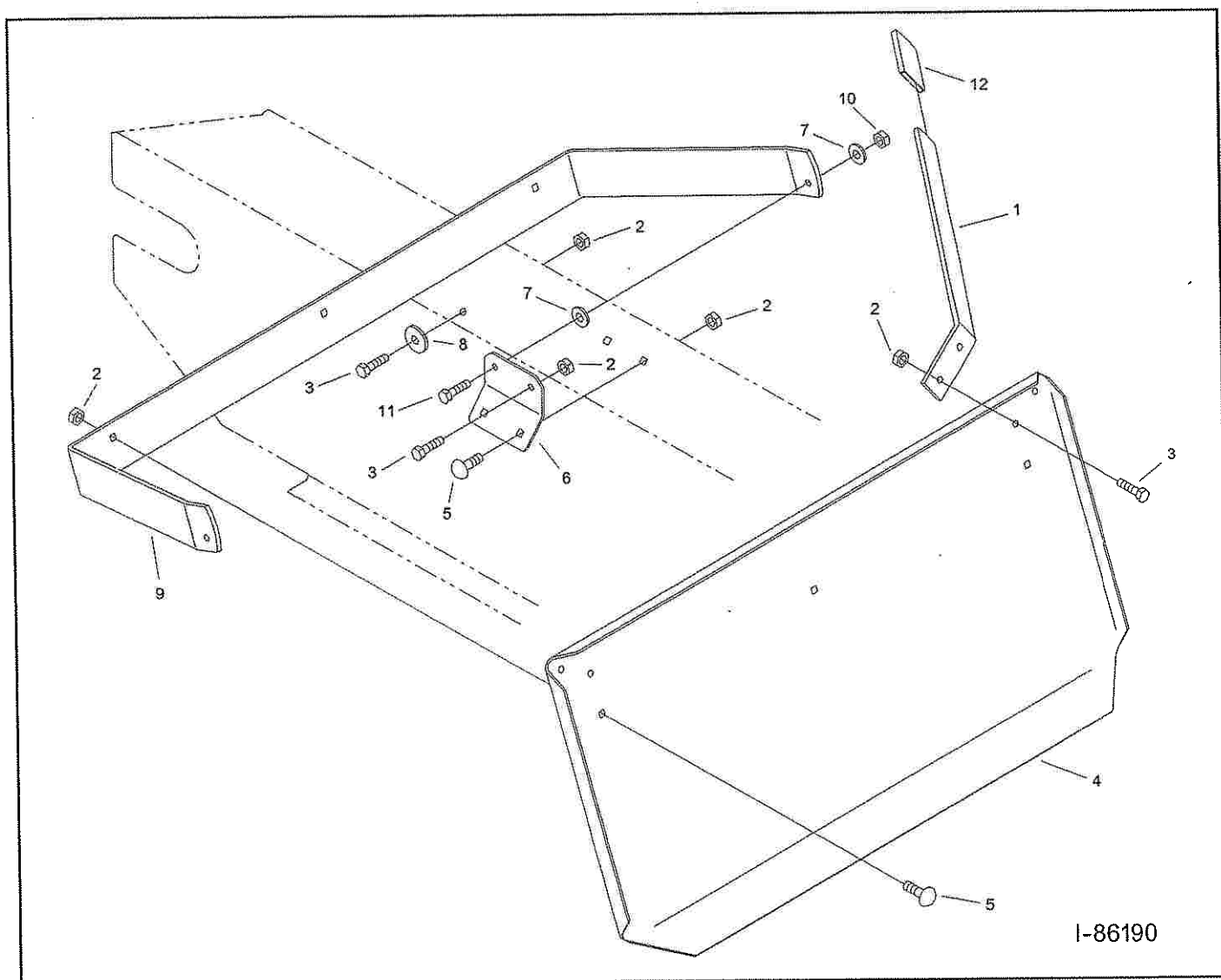


Figure B1 - Endgate Parts Detail

<u>Item#</u>	<u>MC Part#</u>	<u>Qty.</u>	<u>Component Description</u>
1	261365	1	Endgate Handle
2	34367	13	5/16 Flange Nut
3	34328	6	5/16 x 3/4 Flange Bolt
4	261221	1	Endgate
5	34274	7	5/16 x 3/4 Carriage Bolt
6	261361	2	Endgate Bracket
7	34057	4	5/16 Washer
8	34373	2	3/8 Large Washer
9	261360	1	Endgate Frame
10	34072	2	5/16 Stover Nut
11	34336	2	5/16 x 1 Flange Bolt
12	220157	1	Rubber Sleeve

Safety Chain Assembly

NOTE: The safety chain may be ordered as an optional component for the Millcreek 6700P/8700P PTO Spreaders and is strongly recommended if the spreader is to be moved any time on a public roadway.

1. Refer to Figure B2 for an illustration of the hook-up of the safety chain.
2. Attach the chain to the spreader hitch as shown, using the hardware provided (1/2-inch bolt, flat washer, locknut).
3. Wrap the hook end of the chain around the tractor drawbar support or other structural member of the tractor frame and connect it as shown.

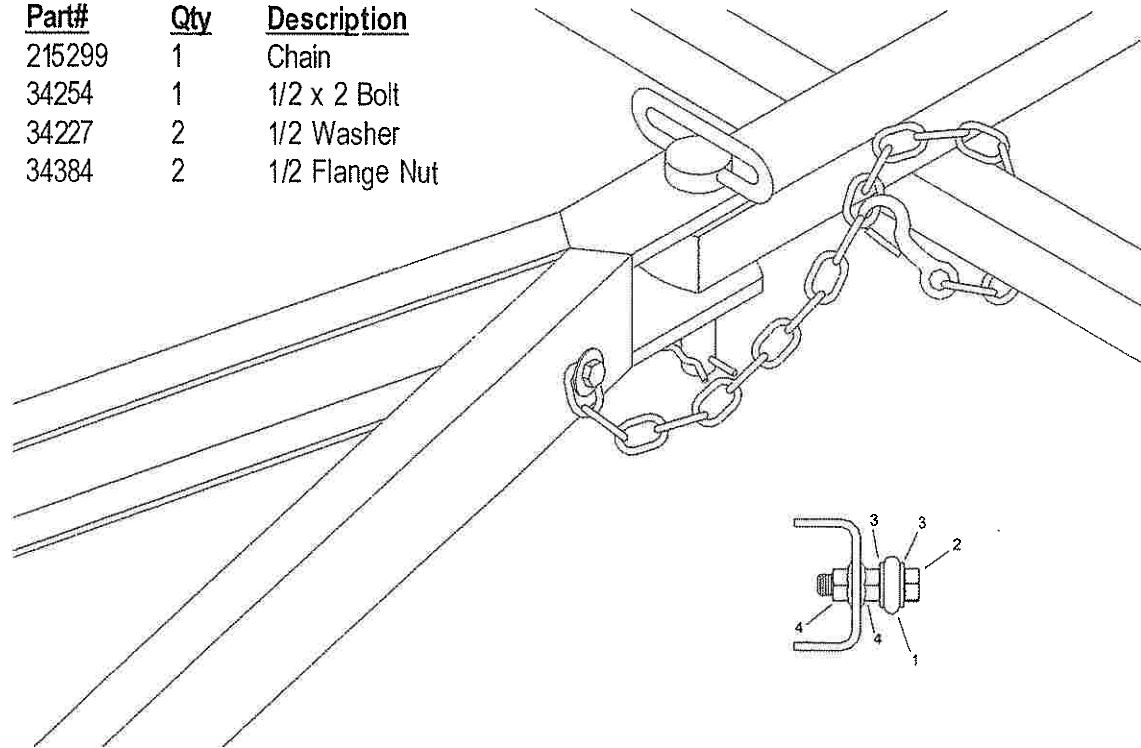


WARNING: For the safety chain to be effective, the installation of the chain should not allow more slack than is necessary for movement during spreader operation. Inspect the safety chain regularly to check the condition of the links and locking/hooks mechanisms; replace the chain as soon as weakness/breakage is noted.

Safety Chain Kit

Millcreek Part# 261494

Item#	Part#	Qty	Description
1	215299	1	Chain
2	34254	1	1/2 x 2 Bolt
3	34227	2	1/2 Washer
4	34384	2	1/2 Flange Nut



1-B7123

Figure B2- Attaching the Safety Chain