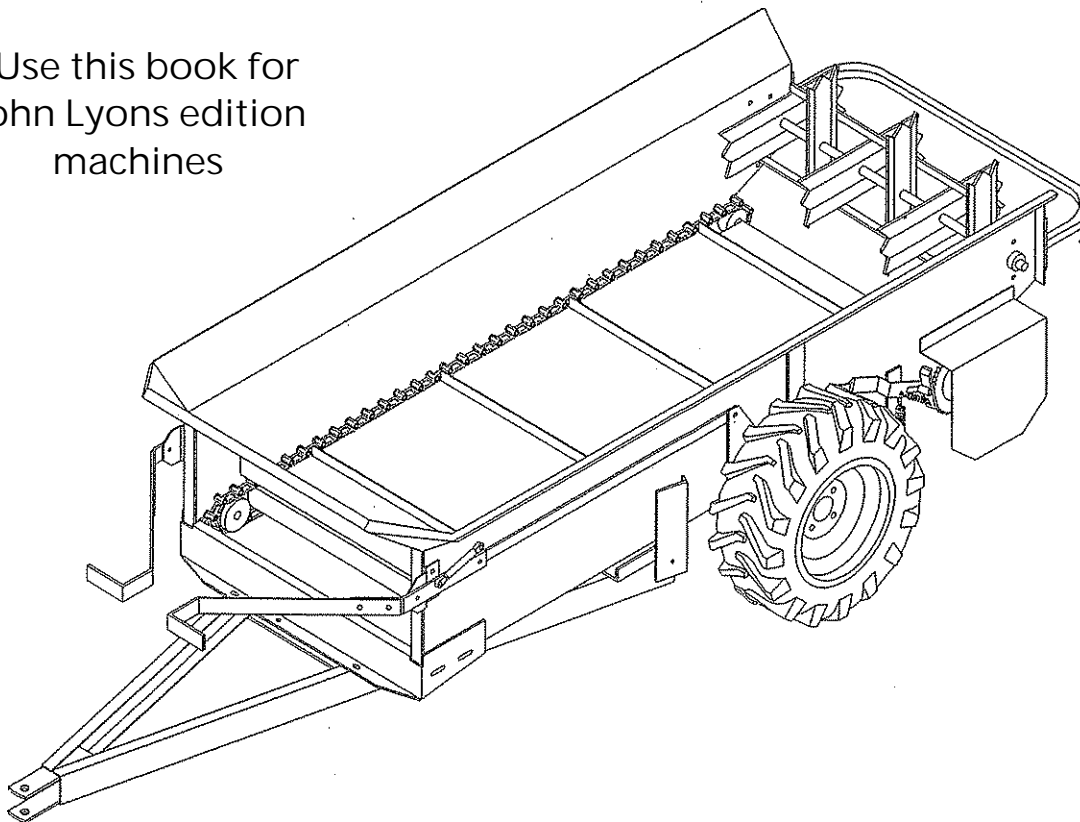


OPERATOR'S MANUAL

MILLCREEK MODELS: 25G and 35G *GROUND DRIVE* SPREADERS

*Use this book for
John Lyons edition
machines



J-86015

PUBLICATION DATE: 12/22/03, Rev. 6

MILLCREEK PART# 43801

Millcreek Manufacturing Company
525 Reservoir Road
Honey Brook, PA 19344
Phone: 800-311-1323



WARNING: DO NOT assemble, operate, or maintain this equipment without first reading and understanding the information provided in this manual. Failure to follow all safety precautions as stated in the manual may result in serious personal injury or death.

WARRANTY INFORMATION

Millcreek Manufacturing Company (hereinafter called the Company) warrants to the original Purchaser, the Equipment, manufactured by the Company, to be free from defects in material and workmanship under normal use and service. The Company obligation under this Warranty shall be limited to replacement or repair of any parts thereof, free of charge, to the original Purchaser, at their place of business, provided, however, that the part(s) to be replaced or repaired, shall, within one year after delivery to the original Purchaser, be demonstrated to be defective; which determination shall be made by the Company. The said components or parts must be returned through the Selling Dealer or Distributor directly to the Company with all transportation charges prepaid. Notice of defect shall be furnished in writing to the Seller and to the agent through whom the machinery was purchased, disclosing in full all known defects and failure in operation and use. Reasonable time shall be given to the Seller to remedy any such defects and failures.

This Warranty does not cover, under any circumstances, any parts, components, or materials which, in the opinion of the Seller and the Company, have been subjected to neglect, misuse, alteration, accident, or repaired with parts other than those manufactured by and obtained from Millcreek Manufacturing Company.

This Warranty does not cover components which are already covered by a separate warranty provided by the supplier of said parts or components.

This Warranty is made in lieu of all other warranties, expressed or implied, including any warranty of merchantability and fitness for use and purpose and of all other obligations or liabilities on the Company part and any implied warranty. The Company neither assumes nor authorizes any other person to assume for it, any other liability in connection with the sale of this equipment. This Warranty shall not apply to this equipment or to any part thereof which has been subjected to accident, negligence, alteration, abuse, or misuse.

The Company makes no warranty whatsoever in respect to accessories or parts not supplied by the Company. The term "original Purchaser," as used in this Warranty, shall be deemed to mean that person for whom the equipment is originally supplied. This Warranty shall apply only within the boundaries of the continental United States.

Under this Warranty, the Company cannot guarantee that conditions existing beyond its control will not affect the Company's ability to obtain materials or manufacture necessary replacement parts.

The Company reserves the right to make design changes, or changes in specifications at any time, without any contingent obligation on the part of the Company to purchasers of machines and parts previously sold.

The Company warrants the construction of the equipment sold herein and will replace at the Company's expense for a period of one year from the date hereof, any parts which prove defective as determined under the terms of this Limited Warranty. High density, polyethylene floors are warranted for 20 years from cracking, rotting, splitting, or peeling.

TRADEMARKS

The Millcreek logo is a trademark of the Millcreek Manufacturing Company. All other brand or product names mentioned are the registered trademarks or trademarks of their respective owners.

COPYRIGHT

Copyright© 2003 Millcreek Manufacturing Company. All rights reserved. No part of this publication may be reproduced, or distributed without the prior written permission of Millcreek Manufacturing Company, 34 Zimmerman Road, Leola, PA 17540. Subject to change without notice.



(

(

(

TABLE OF CONTENTS

SECTION 1: INTRODUCTION	1-1
Guide to this Manual	1-1
For Your Safety... ..	1-1
Inspection & Warranty Registration.....	1-3
 SECTION 2: OPERATION	 2-1
Understanding Spreader Operation	2-1
The Spreader Operating Components	2-1
Guidelines for Loading the Spreader	2-1
Operating the Spreader	2-1
 SECTION 3: MAINTENANCE & ADJUSTMENT	 3-1
Guidelines for Regular Maintenance	3-1
Procedures for Spreader Adjustment	3-2
Adjusting the Rear Pawl	3-2
Re-installing the Beater Drive Chain	3-3
 APPENDIX A: PARTS REFERENCE	 A-1
General Spreader Specifications	A-1
Ordering Information	A-2
Spreader Box Assembly and Safety Shields	A-2
Axle and Wheel Assembly	A-4
Hitch Assembly and Spreader Controls	A-6
Apron Chain and Sprocket Assembly	A-8
Apron Chain Drive Group	A-10
Beaters and Drive Assembly	A-12
Spreader Options	A-14
Parts Cross Reference	A-16

(

(

(

SECTION 1: INTRODUCTION

Guide to this Manual

This manual contains all the information necessary to safely operate and maintain the Millcreek 25G or 35G Spreader. Consult the Table of Contents for a detailed list of topics covered. You'll find this manual's step-by-step procedures easy to follow and understand. Should questions arise, please contact your Millcreek dealer before starting any of the procedures in this manual.

NOTE: This manual covers equipment serial numbers starting from: Model 25G - SN# 8505 and Model 35G- SN# 2155. Procedures provided in this manual apply to *both* spreader models (Model 25G and Model 35G) unless specifically noted otherwise.

Regarding the information presented in this manual:

- All safety, operating, and servicing information reflects current production models at the time of publication of this manual.
- References made to left, right, front, and rear are those directions viewed when facing the unit from the rear.

Please read all sections in the manual care fully—including the important safety information found in this section—before beginning any procedures; doing so ensures your safety and the optimal performance of your Millcreek Spreader.

For Your Safety...

For your safety, Millcreek documentation contains the following types of safety statements (listed here in order of increasing intensity):

- **NOTE:** A clarification of previous information or additional pertinent information.
- **ATTENTION:** A safety statement indicating that potential equipment damage may occur if instructions are not followed.



CAUTION: A safety statement that reminds of safety practices or directs attention to unsafe practices which could result in personal injury if proper precautions are not taken.



WARNING: A *strong* safety statement indicating that a hazard exists which can result in injury or death if proper precautions are not taken.



DANGER! *The utmost levels of safety must be observed;* an extreme hazard exists which would result in high probability of death or irreparable serious personal injury if proper precautions are not taken.

The best operator is a careful operator. By using common sense, observing general safety rules, and adhering to the precautions specific to the spreader, you, the operator, can promote safe equipment operation.

For Your Safety... (continued)

In addition to observing the specific precautions listed throughout the manual, **the following general precautions apply and *must be heeded* to ensure proper, safe operation.**



WARNING: Keep hands and feet from under the spreader at all times. Ensure that you are safely distanced from any other persons before operating the spreader.



WARNING: DO NOT attempt to operate the spreader in areas with steep inclines, ditches, large rocks, stumps, or holes which may endanger the operator by upsetting the tractor or cause damage to the spreader.



CAUTION: To prevent injury and to promote safe spreader operation, keep all shields in place during operation. Ensure that all mounting hardware is properly tightened.



WARNING: Never clean, adjust, or repair the spreader while the tractor is running.



WARNING: Never get off the tractor while it is in motion and/or the spreader is in operation.



WARNING: Never wear loose clothing when operating the spreader as it may become caught in the moving parts of the machine.

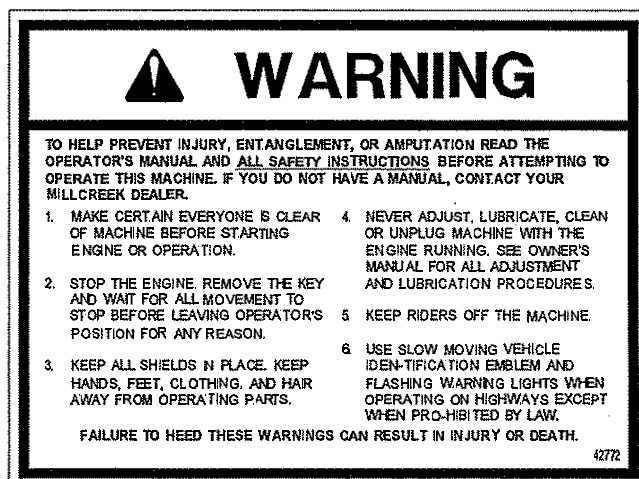
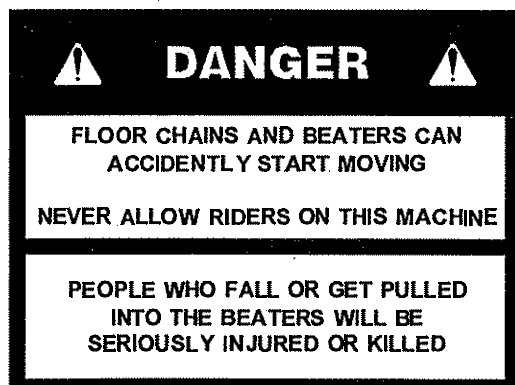


WARNING: Never allow children or anyone else to ride on the spreader.

ATTENTION: To ensure proper and safe operation of the spreader, periodically inspect all parts for excessive wear. Replace worn components with factory-authorized parts.

ATTENTION: DO NOT back up when the spreader is in unloading mode; doing so can cause the beater drive chain to jump off the sprocket (and may damage your spreader).

The following safety decals have been placed on your spreader to remind you of critical safety precautions which must be heeded for the personal safety of you, the operator, and any persons in the vicinity of the equipment while it is in operation. Be sure to keep the safety decals clean and readable. If the decals ever become damaged or illegible, contact your Millcreek dealer for replacements.



Inspection and Warranty Registration

Most spreader models are shipped from your Millcreek Dealer completely assembled and ready for operation. Inspect your new spreader thoroughly upon receipt to ensure that it has been shipped to you in a satisfactory manner. Immediately notify the freight company and your Millcreek dealer in case of shipping damage, shortage(s), and/or errors.

NOTE: If the spreader has not been pre-assembled, please refer to the *Supplemental Dealer's Instructions for Unpacking and Assembly*. Please contact your local Millcreek Dealer for assistance as needed.

Following inspection of your new spreader, locate the Millcreek Warranty Card in the literature packet shipped with your spreader. For proper warranty registration, Millcreek requires that you fill out the warranty registration card and return it *within 30 days* to:

MILLCREEK WARRANTY REGISTRATION
Millcreek Manufacturing Company
34 Zimmerman Road
Leola, PA 17540

For your safety, be sure to locate all safety decals and review their content before proceeding with operating the spreader.

SECTION 2: OPERATION

Understanding Spreader Operation

Proper and safe operation of the Millcreek 25G/35G Spreader requires: (1) being familiar with the spreader's operating components and (2) heeding all safety precautions as stated in this manual.

The Spreader Operating Components

By definition, the left and right sides of the spreader are determined while sitting on the tractor seat.

- The **lefthand spreader lever** *engages the floor apron chain which moves the manure to the rear of the spreader and into the beater.*
- The **righthand spreader lever** *engages the chain that drives the beater and spreads the manure.*

Guidelines for Loading the Spreader for Operation

- Millcreek recommends that you *load the spreader from the front toward the back* to facilitate easier unloading.
- NEVER store manure in the spreader between unloading times during critical cold weather months when a frozen load could result in severe equipment damage (i.e. torn floor apron chain).
- DO NOT store wet manure in the spreader (or keep the spreader outdoors with manure in it)—doing so will accelerate rusting of the steel.

Operating the Spreader

Before proceeding with operation of the spreader, review all safety statements as provided in Section 1 of this manual.

ATTENTION / CAUTION: In order to obtain proper, aggressive spreading action, *the spreader ground speed must reach a minimum of 3.0 miles per hour—the equivalent of a comfortable walking pace.* (Note that the wheels drive the beater action.) However, spreading at speeds over 5.0 miles per hour (i.e. similar to a very brisk walking pace) can cause excessive wear or damage to the equipment.

1. Ensure that the spreader (and tractor) are not in motion (in a stopped position).
2. If you have a spreader with the endgate option, lift the endgate.
3. Engage the right lever for starting the beater.
4. Begin moving forward, and engage the left lever which starts the action of the apron floor chain (moving the material towards the rear of the spreader).
5. Ensure that you are reaching the optimal operating speed for spreading (at least 3.0 mph, but not more than 5.0 mph). Remember that this optimal speed is similar to a comfortable walking pace.

Operating the Spreader (continued)

6. When the spreader is almost empty and there is very little manure pushing against the beater, disengage the right spreader lever (which controls the beater rotation).
7. Allow the apron chain to run the remaining manure out the back of the spreader.
8. When completely unloaded, disengage the left spreader lever to stop the action of the apron chain.

SECTION 3: MAINTENANCE & ADJUSTMENT

Guidelines for Regular Maintenance



WARNING: All shields must be replaced after maintenance or adjustment procedures are performed. Failure to do so could result in serious personal injury or death.

Performing regular maintenance on you Millcreek Spreader will help ensure optimal performance. Please follow these guidelines for maintaining your spreader:

- Clean the spreader after each use.
- Check the spreader each time it is used for loose, bent, broken or missing parts.
ATTENTION: During operation, listen for abnormal sounds which might indicate loose parts or other equipment damage. Correct any parts problems immediately; expanded parts views of all spreader assemblies are provided in the Appendixes at the back of this manual.
- NEVER store manure in the spreader between unloading times during critical cold weather months when a frozen load could result in severe equipment damage (i.e. torn floor apron chain). Storing wet manure in the spreader (or keeping the spreader outdoors with manure in it) will accelerate rusting of the steel.
- Use a traction implement tire on the drive wheel.
- Apply chain lube once a month to the floor apron chain.
- Periodically check the floor apron chain for tension/tightness (refer to Figure 4A).

Procedure for checking/adjusting the floor apron chain:

- a) Pull up on the center slat of the floor apron chain.
- b) If you can lift it higher than 5 inches, the chain is too loose.
- c) If you can lift it no higher than 3 inches, the chain is too tight.
- d) If the chain needs adjustment, use a 1/2" wrench to loosen the two side nuts on each side of the spreader box as shown in Figure 4A. Turn the *front* nut clockwise or counterclockwise until correct tension/tightness is achieved. Repeat for the other side. *Make sure that the chains on each side of the apron are equally taut.*
- e) Re-tighten the side nuts.

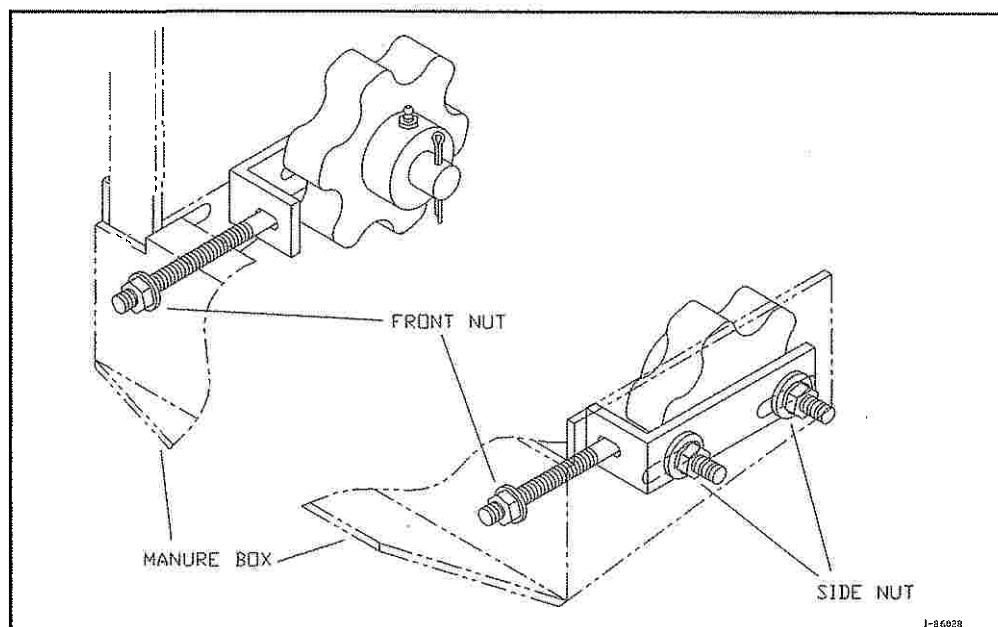


Figure 4A- Adjusting the Floor Apron Chain for Proper Tension

Procedures for Spreader Adjustment

Problems with spreader operation may indicate that certain adjustments are required to restore proper functioning. The following procedures address common problems which may be encountered in spreader operation.

Adjusting the Rear Pawl

If the floor apron chain is not moving, the most common cause is improper brake (rear) pawl adjustment. (by jacking up the lefthand drive wheel and turning the wheel by hand, you will be able to observe the brake pawl engagement in the sprocket teeth.)

1. Refer to Figure 4B.
2. Remove the shield covering the brake pawl assembly by removing the two (2) bolts, washers, and nuts holding it in place.
3. Loosen the nut behind the brake pawl using a 9/16" wrench.
4. With the roller positioned at the highest point on the star cam, tap the brake pawl up or down as necessary to attain a 1/16" to 1/8" clearance between the brake pawl and the sprocket tooth (see close-up detail in Figure 4B).
5. After the desired adjustment is achieved, re-tighten the rear nut.
6. Replace the safety shield.

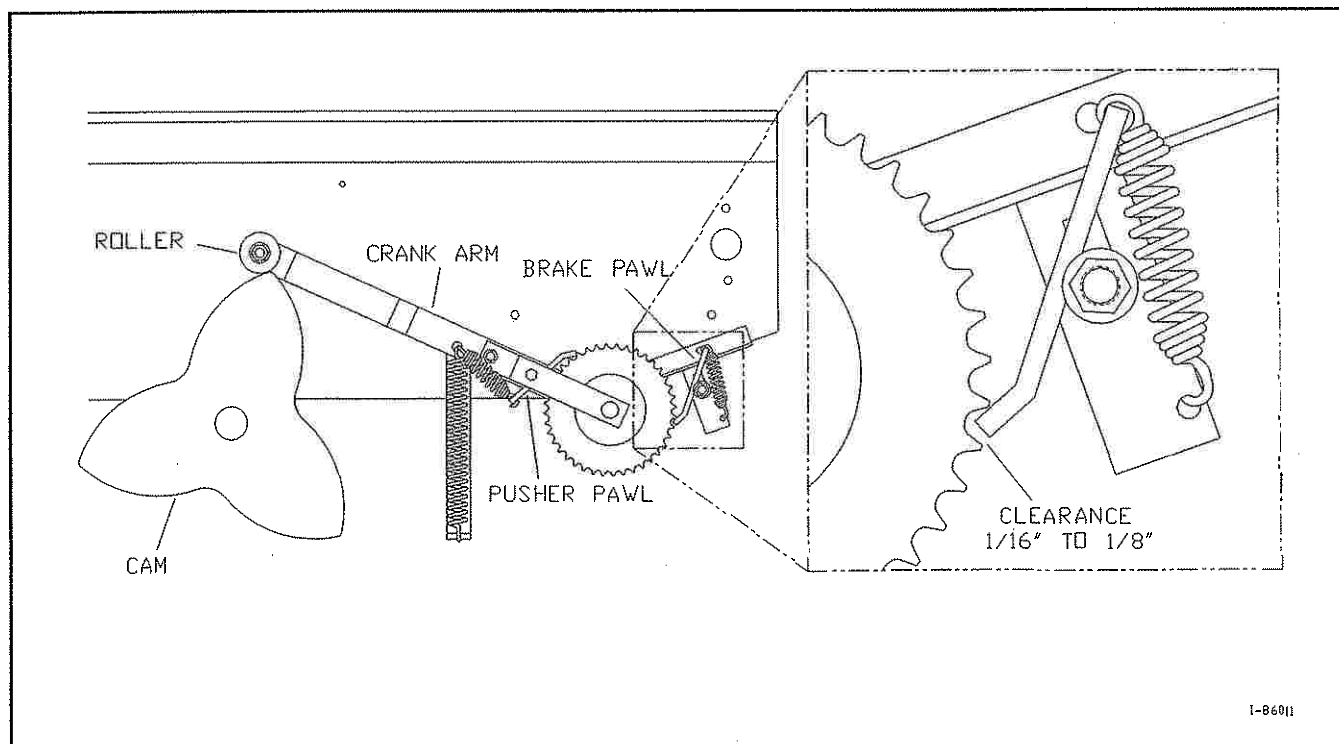


Figure 4B - Adjusting the Rear Brake Pawl

Procedures for Spreader Adjustment (continued)

Re-installing the Beater Drive Chain

Backward motion (backing up) with the spreader engaged will most probably cause the beater drive chain to come off the rear sprocket. The following procedure explains how to re-install the chain should this ever become necessary.

1. Disconnect the spreader from the tractor.
2. Jack up and secure the right side of the spreader.
3. Remove the right safety shield by removing the three (3) bolts, washers, and nuts.
4. Engage the lever for the beater drive chain into unloading mode.
5. Refer to Figure 4C. Re-install the chain on the rear sprocket.
6. Re-install the chain over the large drive sprocket.
7. Re-install the chain around the bottom idler sprocket.
8. Re-install the chain over the top idler sprocket by pushing the top idler sprocket to the rear of the spreader. Ensure that the chain is positioned properly as shown in Figure 4C.
9. Re-install the safety shield.

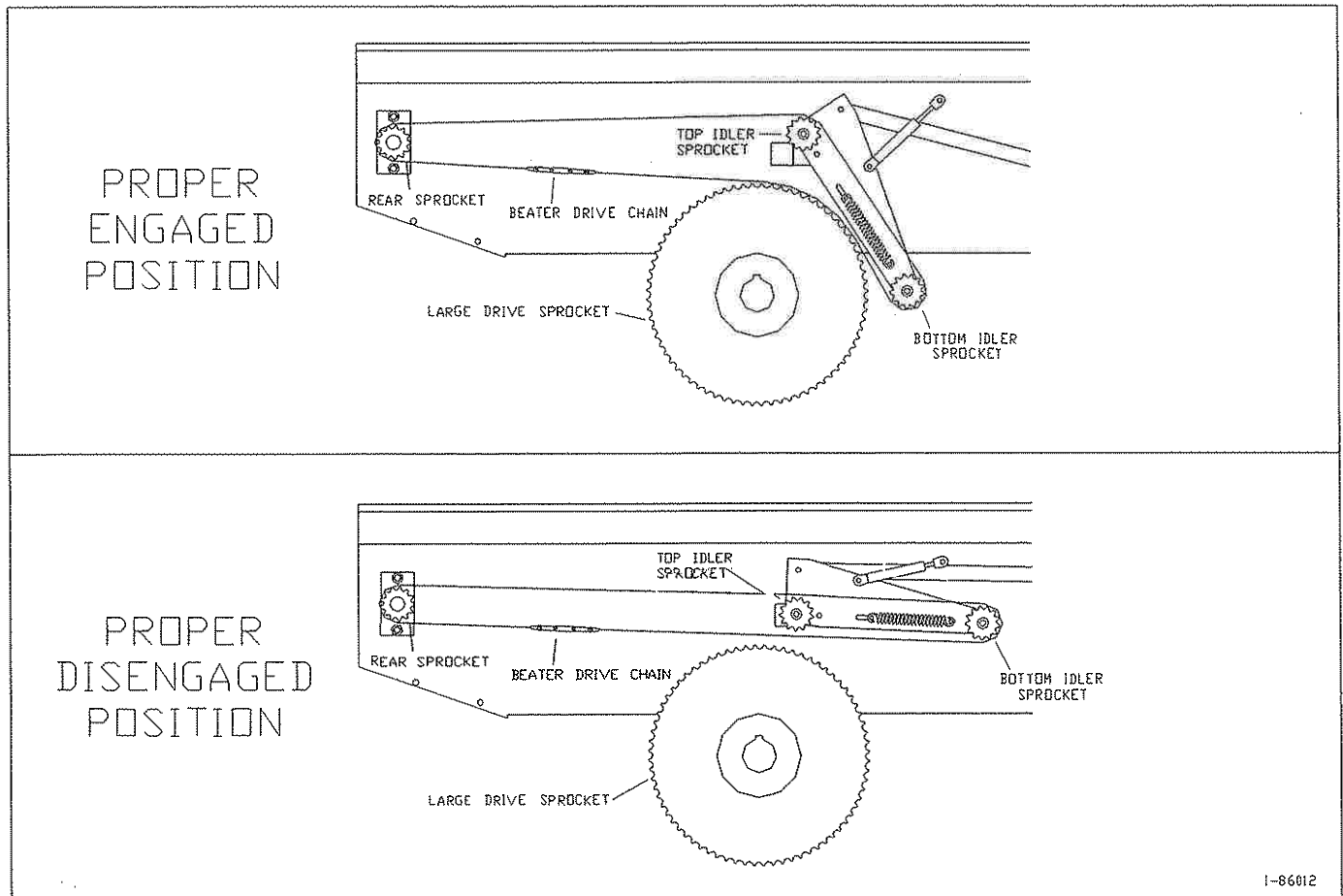


Figure 4C- Beater Drive Chain Installed in the Proper (Engaged) Position

APPENDIX A: PARTS REFERENCE

The following information is provided for your reference in understanding how the spreader is assembled and how spare parts can be identified and ordered properly.

General Spreader Specifications

	Model 25G	Model 35G
Capacity, heaped	28.0 cubic ft	37.2 cubic ft
Body Length	72inches	96inches
Body Width	28inches	28 inches
Body Flare Width	34inches	34inches
Body Height	15 inches	15 inches
Overall Length	9 ft., 3 inches	11 ft., 3 inches
Overall Width	46.5 inches	46.5 inches
Overall Height	26.5 inches	26.5 inches
Loading Height	26.5 inches	26.5 inches
Construction	All steel, optional poly floor	All steel, optional poly floor
Apron Chain	#55 steel detachable	#55 steel detachable
Tires*	6.00-12 traction tire	6.00-12 traction tire
Bearings	Oil impregnated, bronze	Oil impregnated, bronze
Beater Drive	#2040 roller chain	#2040 roller chain
Apron Drive	Ratchet	Ratchet
Body Finish	Industrial, rust-proof	Industrial, rust-proof
Weight (with tires)	325 lbs.	395 lbs.
Tractor Size (weight required)	10 HP & greater	18 HP & greater

*NOTE: The tires are mounted in reverse direction of "normal" installation.

Ordering Information

When ordering replacement parts, please provide the following information to your local Millcreek dealer:

- Model and Serial Number of the unit (located on the front right corner of the spreader)
- Part Number and Description as it appears on the following drawings/parts lists

Spreader Box Assembly & Safety Shields

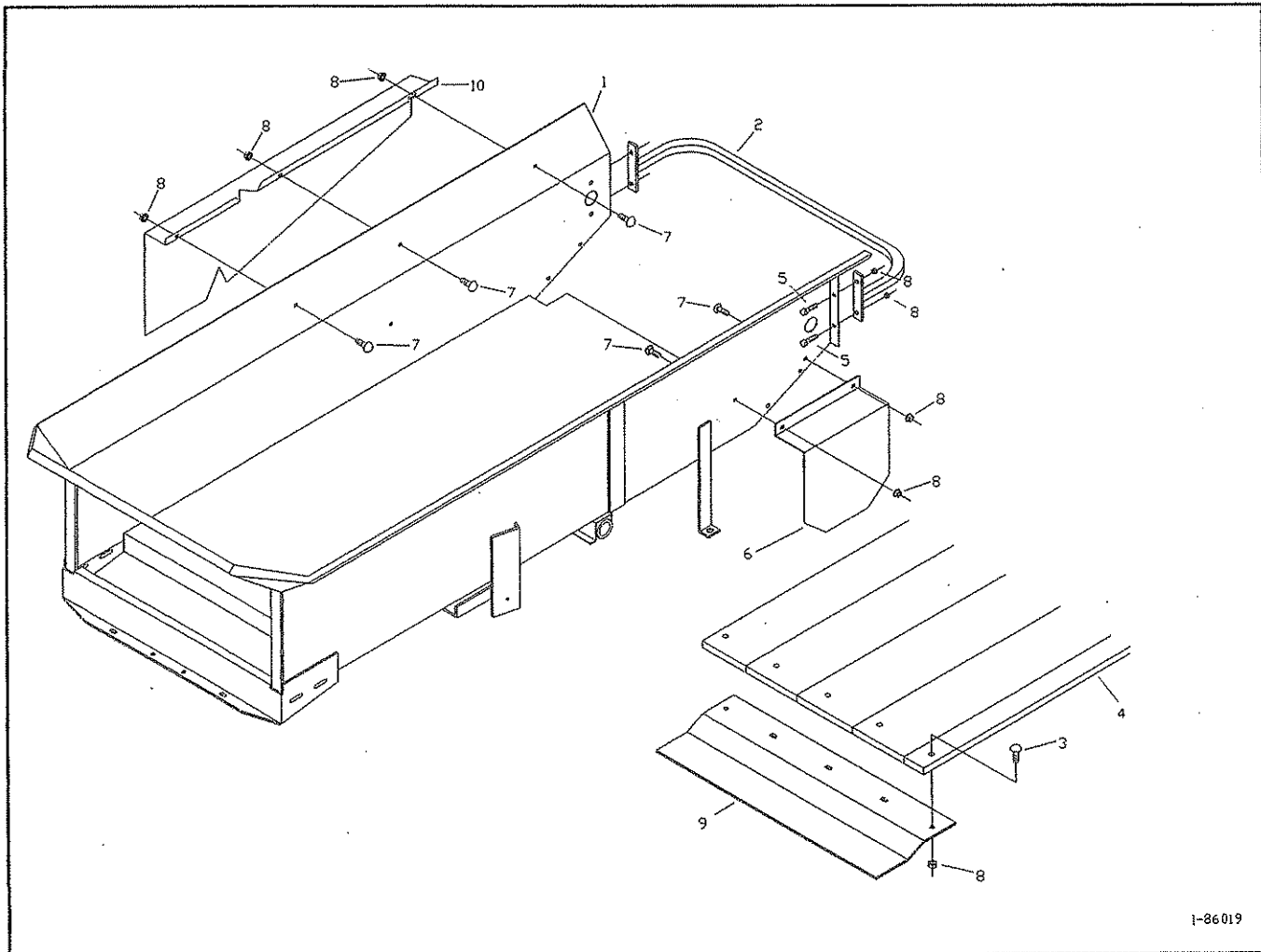


Figure A1 - Spreader Box Assembly Parts Detail

Spreader Box Assembly (continued)

<u>Item #</u>	<u>MC Part#</u>	<u>Qty.</u>	<u>ComponentDescription</u>
1	260176	1	Model 25 Spreader Box, Steel Floor
	260177	1	Model 25 Spreader Box, Poly Floor
	260178	1	Model 35 Spreader Box, Steel Floor
	260179	1	Model 35 Spreader Box, Poly Floor
2	260338	1	Rear Guard
3	34320	15	5/16 x 1-1/4 Carriage Bolt
4	215100	4	Model 25 Poly Board, 6" Wide
	215102	4	Model 35 Poly Board, 6" Wide
	215296	1	Model 25 Poly Board, 3" Wide
	215297	1	Model 35 Poly Board, 3" Wide
5	34328	4	5/16x 3/4 Flange Bolt
6	260129	1	Ratchet Shield
7	34337	5	5/16 x 1/2 Carriage Bolt
8	34099	24	5/16Flange Nut
9	260112	2	Poly Floor Hold Down
10	260996	1	Beater Drive Shield

Axle and Wheel Assembly

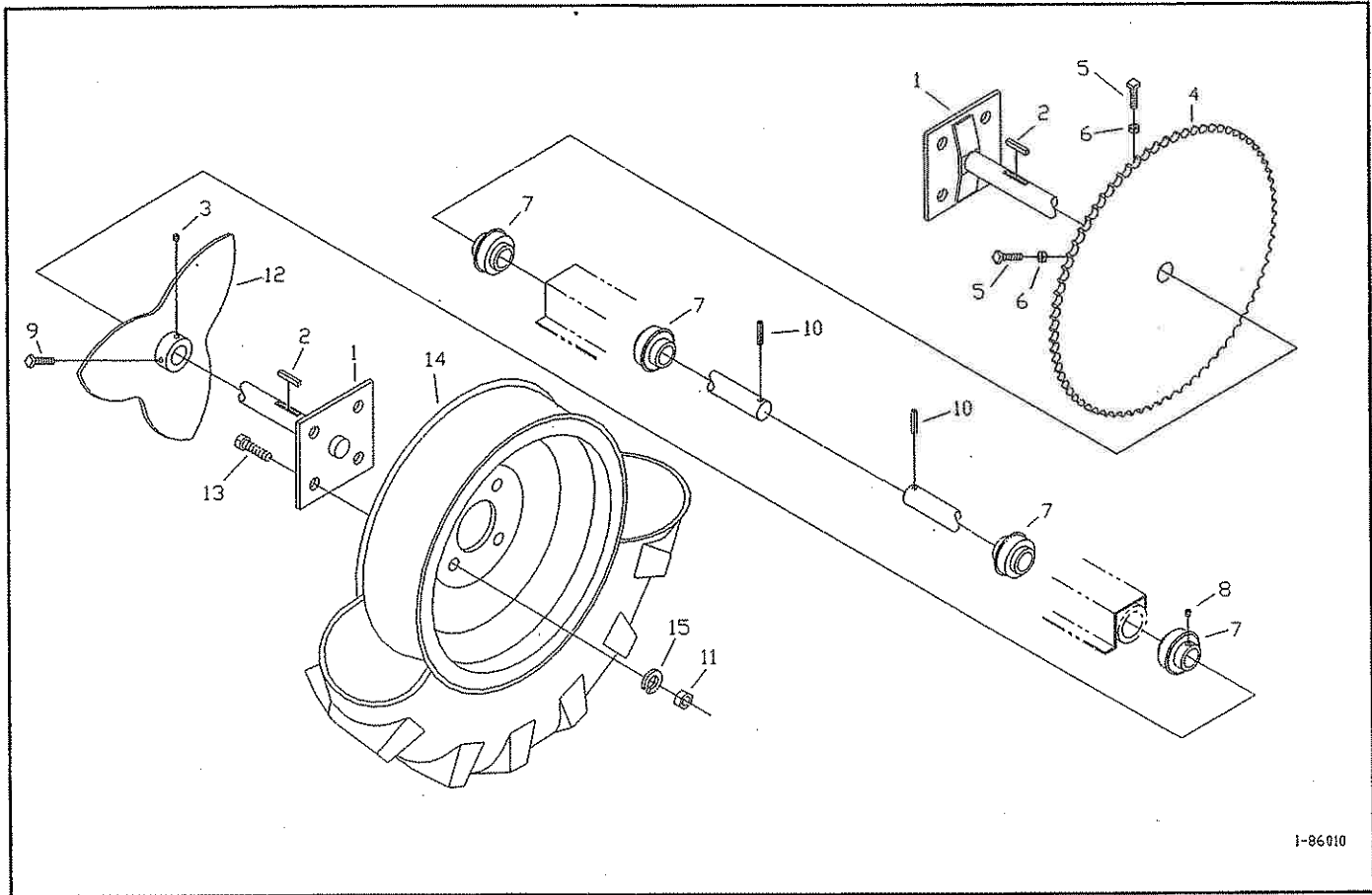


Figure A2 - Axle and Wheel Assembly Parts Detail

NOTE: The spreader tires are mounted in reverse direction of the "normal" installation.

Axle and Wheel Assembly (continued)

<u>Item#</u>	<u>MC Part#</u>	<u>Qty.</u>	<u>Component Description</u>
1	260121	2	Axle Shaft
2	210130	2	1/4 x 1 Key
3	NA	1	5/16 x 5/16 Set Screw
4	210125	1	72 Tooth Sprocket (includes items 3, 5 & 6)
5	34215	2	5/16 x 2 Square Head Set Screw
6	34020	2	5/16Nut
7	210329	4	Axle Bearing
8	N/A	8	1/4 x 1/4 Set Screw
9	34290	1	5/16 x 3/4 Square Head Set Screw
10	220106	2	1/4 x 1-1/4 Roll Pin
11	34034	8	1/2 Nut
12	260263	1	Star Cam (includes items 3 & 18)
13	34311	8	1/2 x 1-1/4 Bolt
14	215120	1	Wheel and Tire LH
	215263	1	Wheel and Tire RH
	215134	1	Steel Wheel Option RH
	215135	1	Steel Wheel Option LH
15	34035	8	1/2 Lock Washer

Hitch Assembly and Spreader Controls

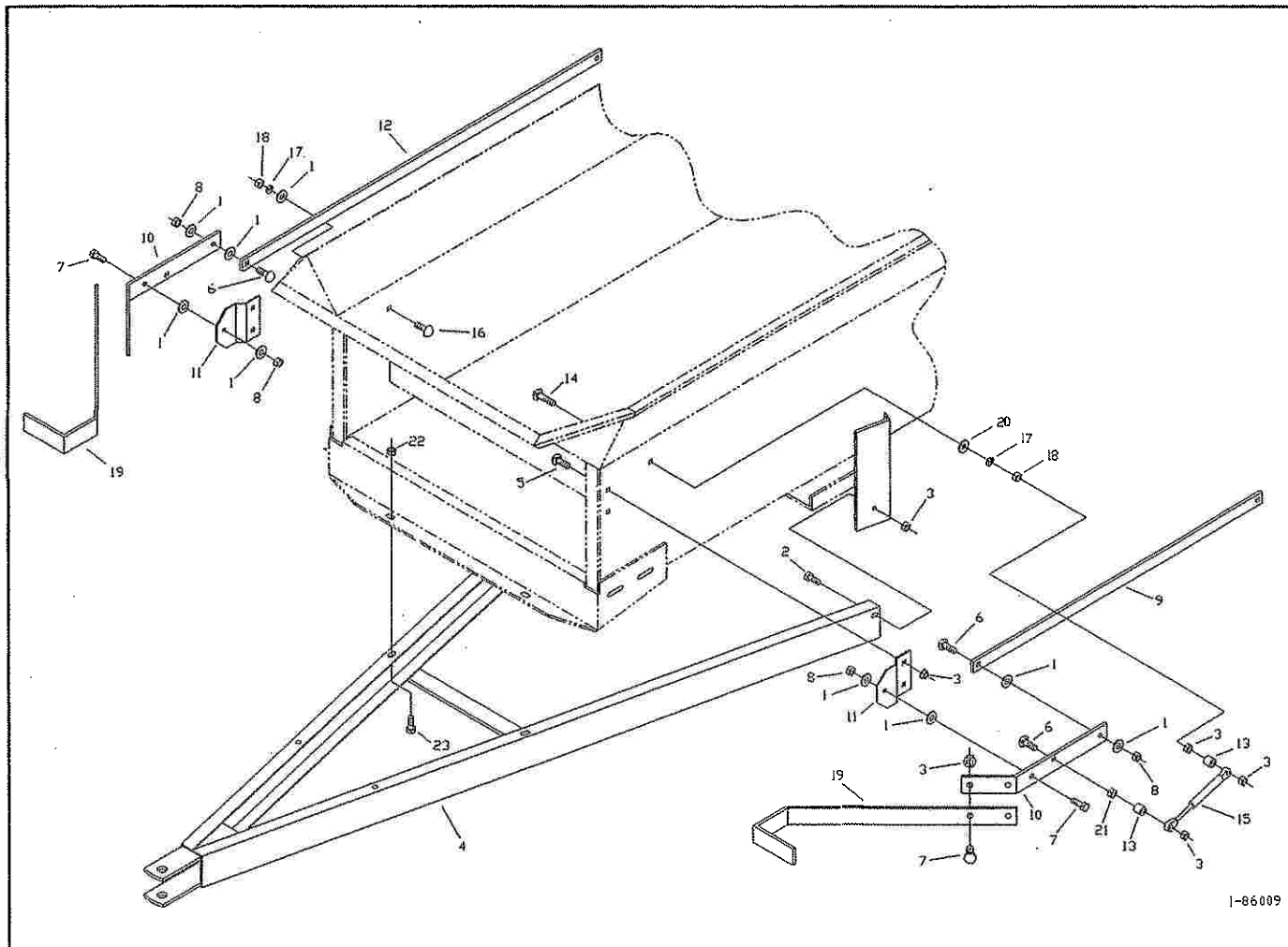


Figure A3 - Hitch Assembly and Controls Parts Detail

Hitch Assembly and Spreader Controls (continued)

<u>Item#</u>	<u>MC Part#</u>	<u>Qty.</u>	<u>Component Description</u>
1	34057	9	5/16 Washer
2	34328	2	5/16 x 3/4 Flange Bolt
3	34099	13	5/16 Flange Nut
4	260102	1	Hitch
5	34337	4	5/16 x 1/2 Low Shoulder Carriage Bolt
6	34317	3	5/16 x 1-1/4 Carriage Bolt
7	34336	6	5/16 x 1 Flange Bolt
8	34072	4	5/16 Grade B Lock Nut (Stover)
9	260991	1	Model 25 Left Lever Link
	261059	1	Model 35 Left Lever Link
10	260987	2	Lever
11	260986	2	Lever Pivot Bracket
12	260988	1	Model 25 Right Lever Link
	261058	1	Model 35 Right Lever Link
13	210342	2	Spacer
14	34283	1	5/16 x 2-1/2 Carriage Bolt
15	220163	1	Gas Shock
16	34275	1	5/16 x 1 Carriage Bolt
17	34203	2	5/16 Lock Washer
18	34020	2	5/16 Nut
19	261136	2	Handle
20	261159	1	5/16 Sq. Washer
21	34357	1	5/16 Jam Nut
22	34009	2	3/8 Flange Nut
23	34330	2	3/8 x 3/4 Flange Bolt

Apron Chain and Sprocket Assembly

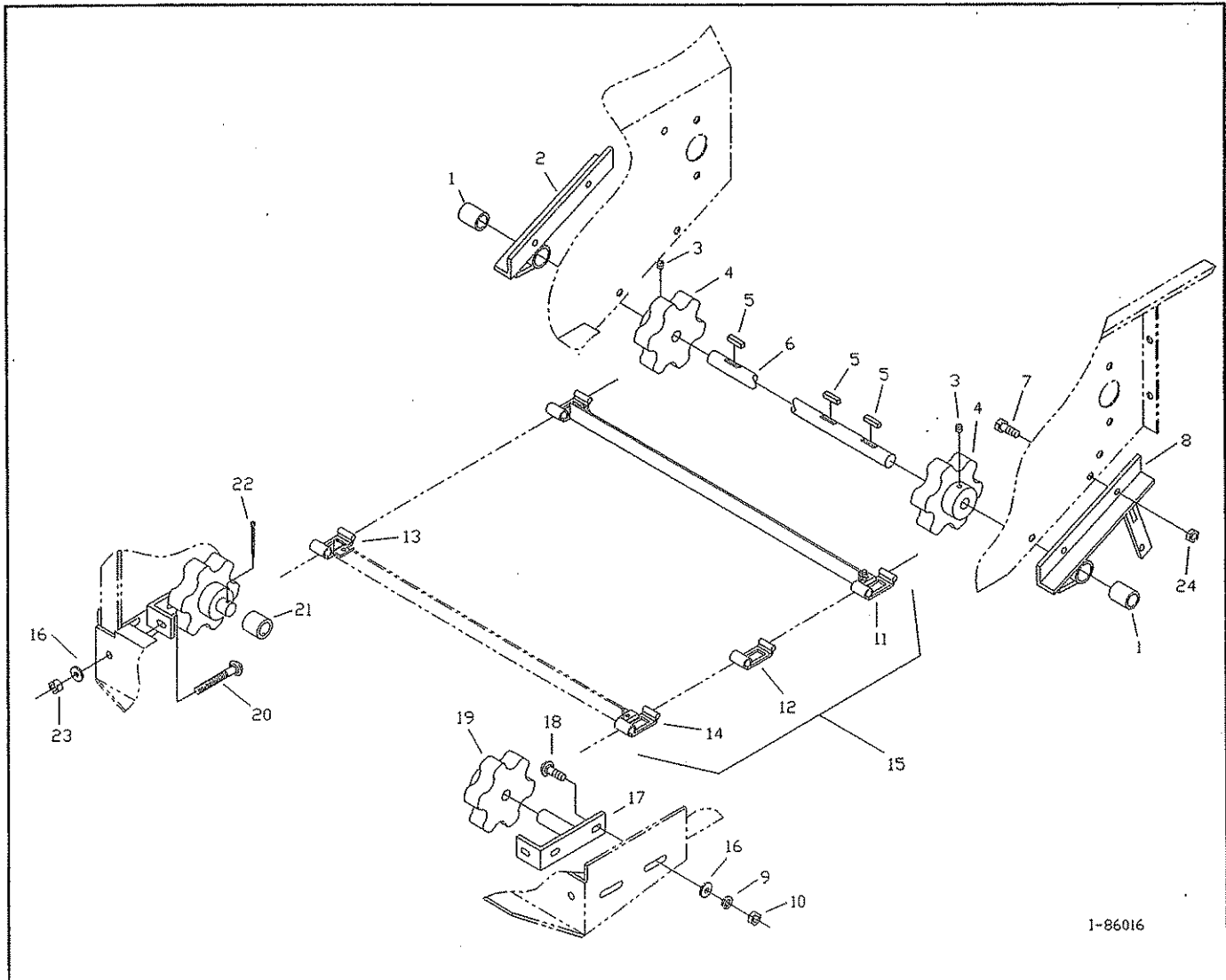


Figure A4 - Apron Chain and Sprocket Assembly Parts Detail

Apron Chain and Sprocket Assembly (continued)

<u>Item#</u>	<u>MC Part#</u>	<u>Qty.</u>	<u>Component Description</u>
1	210110	2	Bushing
2	260325	1	Apron Bearing RH (includes item #1)
3	NA	2	5/16 x 5/16 Set Screw
4	210111	2	Apron Sprocket (includes item #3)
5	210129	3	3/16 x 1 Key
6	260130	1	Apron Shaft
7	34328	4	5/16 x 3/4 Flange Bolt
8	260328	1	Apron Bearing LH (includes item #1)
9	34203	4	5/16 Lock Washer
10	34020	4	5/16 Nut
11	260973	8	Apron Slat, Model 25 (includes item #13 & 14)
	260973	11	Apron Slat, Model 35 (includes item #13 & 14)
12	210238	144	Apron Link, Model 25
	210238	196	Apron Link, Model 35
13	210236	8	Attachment Link RH, Model 25
	210236	11	Attachment Link RH, Model 35
14	210237	8	Attachment Link LH, Model 25
	210237	11	Attachment Link LH, Model 35
15	260499	1	Apron Assembly, Model 25
	260500	1	Apron Assembly, Model 35
16	34057	6	5/16 Washer
17	260329	2	Apron Adjustment Bracket
18	34275	4	5/16 x 1 Carriage Bolt
19	210112	2	Idler Sprocket (includes item #21)
20	34366	2	5/16 x 3 Carriage Bolt
21	210133	2	Bushing
22	34209	2	Cotter Pin
23	34223	2	5/16 Nylon Stop Nut
24	34099	4	5/16 Flange Nut

Apron Chain Drive Group

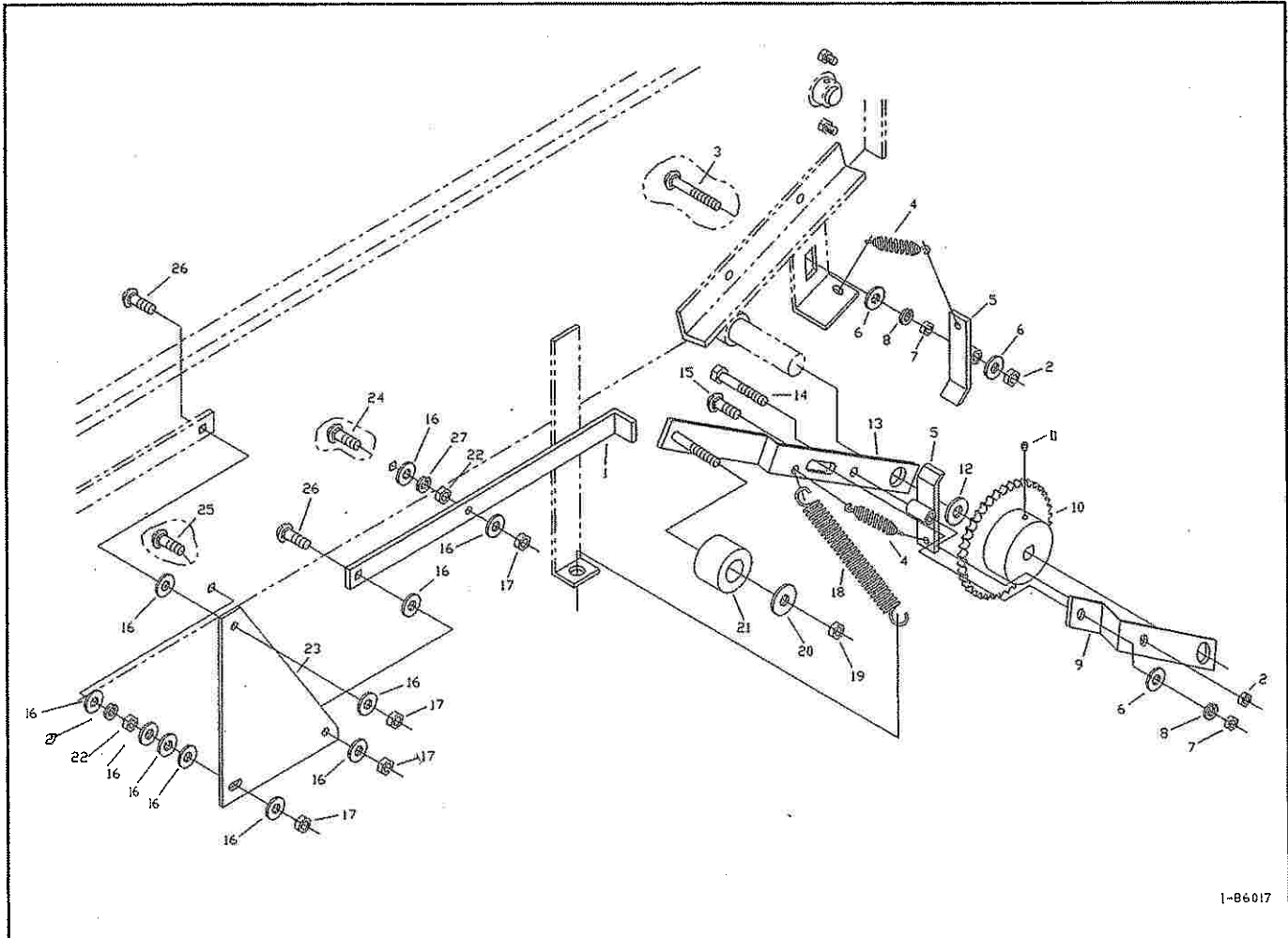


Figure A5 - Apron Chain Drive Group Parts Detail

Apron Chain Drive Group (continued)

<u>Item#</u>	<u>MC Part #</u>	<u>Qty.</u>	<u>Component Description</u>
1	260993	1	Lift Arm
2	34095	2	3/8 Grade B Lock Nut (Stover)
3	34219	1	3/8 x 2-1/2 Carriage Bolt
4	220104	2	Pawl Spring
5	260332	2	Pawl
6	34018	3	3/8 Washer
7	34087	2	3/8 Nut
8	34141	2	3/8 Lock Washer
9	260196	1	Short Crank Arm
10	210119	1	40 Tooth Sprocket (includes item #11)
11	N/A	2	5/16 x 5/16 Set Screw
12	34201	1	3/4 SAE Flat Washer
13	260947	1	Long Crank Arm
14	34202	1	3/8 x 2-1/4 Bolt
15	34006	1	3/8 x 1 Carriage Bolt
16	34057	10	5/16 Washer
17	34223	4	5/16 Nylon Stop Nut
18	220105	1	Ratchet Spring
19	34198	1	1/2 Thin Stop Nut
20	34094	1	1/2 Washer
21	261050	1	Nylon Cam Roller
22	34020	4	5/16 Nut
23	260995	1	Ratchet Lift Link
24	34317	1	5/16 x 1-1/4 Carriage Bolt
25	34282	1	5/16 x 1-1/2 Carriage Bolt
26	34275	2	5/16 x 1 Carriage Bolt
27	34203	2	5/16 Lock Washer
28	261159	1	5/16 Sq. Washer

Beaters and Drive Assembly

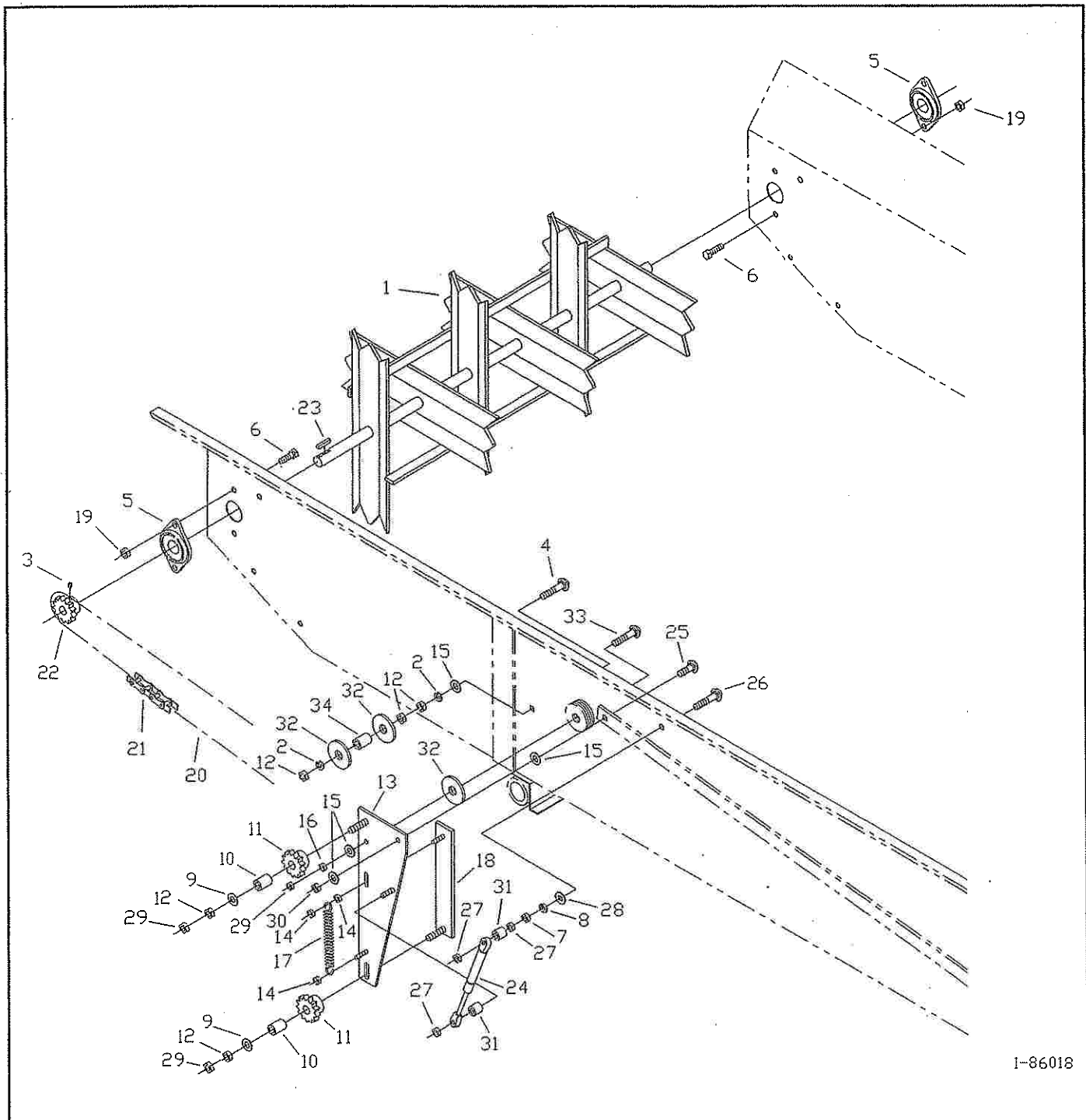


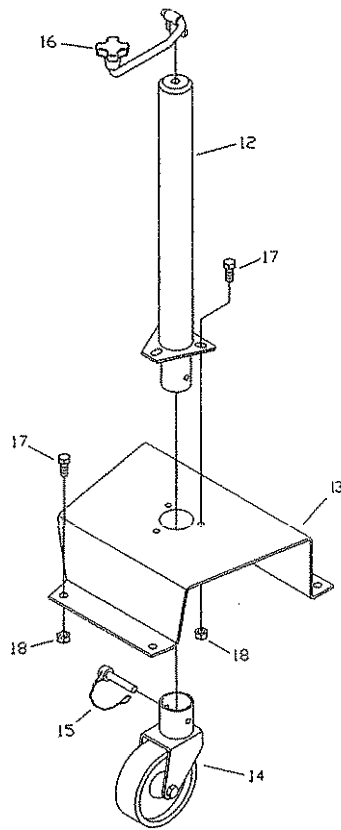
Figure A6 - Beaters and Drive Assembly Parts Detail

Beaters and Drive Assembly (continued)

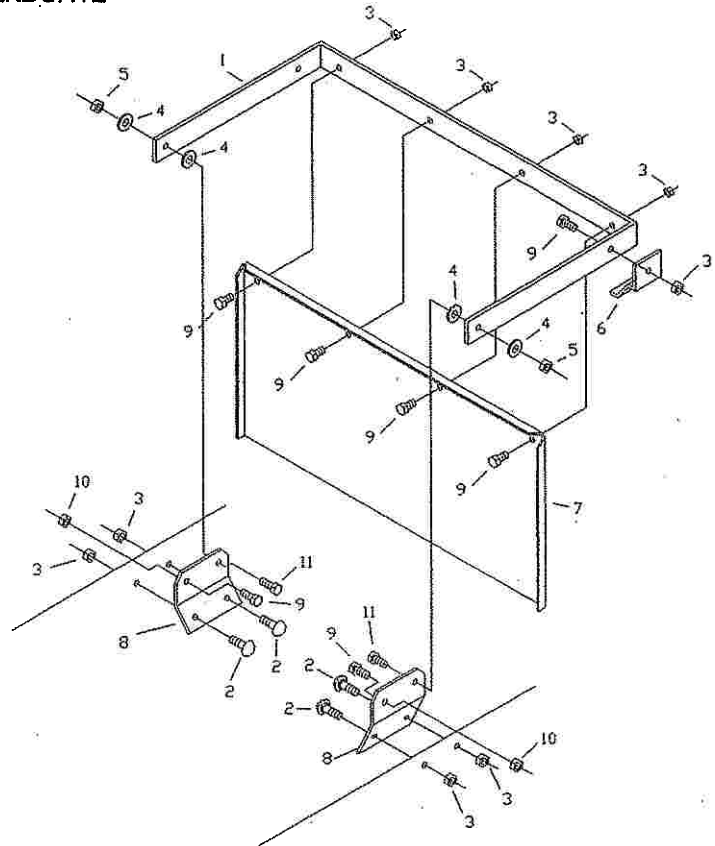
<u>Item#</u>	<u>MC Part #</u>	<u>Qty.</u>	<u>Component Description</u>
1	260234	1	Beater
2	34141	2	3/8 Lock Washer
3	34306	2	1/4 x 3/8 Set Screw
4	34375	1	3/8 x 3 Carriage Bolt
5	210106	2	3/4" Spherical Ball Bearing
6	34328	4	5/16 x 3/4 Flange Bolt
7	34020	1	5/16 Nut
8	34203	1	5/16 Lock Washer
9	34018	2	3/8 Flat Washer
10	210103	2	Bushing
11	260345	2	13 Tooth Sprocket (includes item #10)
12	34087	5	3/8 Nut
13	261270	1	Lifter Arm
14	34124	3	1/4 Stop Nut
15	34057	4	5/16 Washer
16	34220	1	3/8 Nylon Lock Nut
17	220138	1	Spring
18	261055	1	Chain Tensioner Bracket
19	34099	4	5/16 Flange Nut
20	210134	1	Beater Chain, #40 x 168 Links (includes item #21)
21	210328	1	Connector Link #40 Roller Chain
22	210123	1	13 Tooth Sprocket (includes item #3)
23	210128	1	3/16 x 3/4 Key
24	220163	1	Gas Shock
25	34275	1	5/16 x 1 Carriage Bolt
26	34283	1	5/16 x 2-1/2 Carriage Bolt
27	34099	3	5/16 Flange Nut
28	261159	1	5/16 Sq. Washer
29	34356	3	3/8 Jam Nut
30	34223	1	5/16 Nylon Stop Nut
31	210342	2	Spacer
32	34373	3	Large 3/8 Washer
33	34219	1	3/8 x 2-1/2 Carriage Bolt
34	210363	1	Spacer

Spreader Options

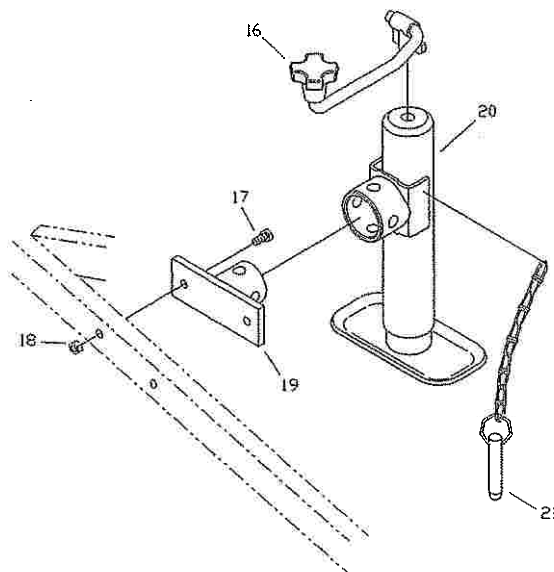
DOLLY WHEEL JACK



ENDGATE



JACK STAND



1-86013

Figure A7-Spreader Options Parts Detail

Spreader Options (continued)

NOTE: The following parts list contains parts for *all spreader options*. Refer to the drawings for the corresponding item numbers.

Item#	Millcreek Part #	Quantity			Component Description
		Endgate	Dolly Jack	Jack	
1	260967	1			Endgate Frame
2	34274	4			5/16 x 3/4 Carriage Bolt
3	34099	10			5/16 Flange Nut
4	34057	4			5/16 Washer
5	34072	2			5/16 Grade B Lock Nut (Stover)
6	261113	2			Endgate Stop
7	260966	1			Endgate
8	260965	2			Endgate Plate
9	34328	8			5/16 x 3/4 Flange Bolt
10	34223	2			5/16 Nylon Stop Nut
11	34336	2			5/16 x 1 Flange Bolt
12	261462		1		Jack for Wheel (includes item 16)
13	261458		1		Dolly Jack Bracket
14	215329		1		Caster Wheel
15	220118		1		Wire Lock Pin
16	215331		1	1	Jack Crank Assembly
17	34199		5	2	3/8 x 1 Bolt
18	34009		5	2	3/8 Flange Nut
19	261457			1	Jack Bracket
20	215320			1	Jack (includes items 16 & 21)
21	215323			1	Pin & Chain Assembly

